

L_p consonant approximations of belief functions

Fabio Cuzzolin

Abstract

In this paper we solve the problem of approximating a belief measure with a necessity measure or “consonant belief function” in a geometric framework. Consonant belief functions form a simplicial complex in both the space of all belief functions and the space of all mass vectors: partial approximations are first sought in each component of the complex, while global solutions are selected among them. As a first step in this line of study, we seek here approximations which minimize L_p norms. Approximations in the mass space can be interpreted in terms of mass redistribution, while approximations in the belief space generalize the maximal outer consonant approximation. We compare them with each other and with other classical approximations, and illustrated them with the help of a running example.

Index Terms

Theory of evidence, possibility theory, consonant belief functions, geometric approach, simplicial complex, (outer) consonant approximation, isopignistic function, L_p norms.

I. INTRODUCTION

The theory of evidence [1] is a popular approach to uncertainty description in which probabilities are replaced by *belief functions* (b.f.s), functions $b : 2^\Theta \rightarrow [0, 1]$ on the power set $2^\Theta = \{A \subseteq \Theta\}$ of the sample space Θ of the form $b(A) = \sum_{B \subseteq A} m_b(B)$, where $m_b : 2^\Theta \rightarrow [0, 1]$ is a non-negative, normalized set function called “basic probability assignment” (b.p.a.) or “mass assignment”. Belief functions assign values $b(A)$ between 0 and 1 to subsets of the sample space Θ rather than single elements. In opposition, possibility theory [2] studies *possibility measures*,

F. Cuzzolin is with the Department of Computing and Communication Technologies, Oxford Brookes University, Oxford, UK. Email: Fabio.Cuzzolin@brookes.ac.uk.

i.e., functions $Pos : 2^\Theta \rightarrow [0, 1]$ on the power set such that $Pos(\bigcup_i A_i) = \sup_i Pos(A_i)$ for any family of subsets $\{A_i | A_i \in 2^\Theta, i \in I\}$, where I is an arbitrary set index. Given a possibility measure Pos , the dual *necessity* measure is defined as $Nec(A) = 1 - Pos(A^c)$. Necessity measures have counterparts in the theory of evidence in the form of *consonant* belief functions (co.b.f.s), i.e., b.f.s whose non-zero mass subsets $m_b(A) \neq 0$ or “focal elements” (f.e.s) are nested [1] and form a chain (totally ordered collection) of subsets $A_1 \subset \dots \subset A_m, A_i \subseteq \Theta$. Approximating a belief function with a necessity measure amounts therefore to mapping it to a consonant b.f. [3], [4], [5], [6]. As possibilities are completely determined by their values on the singletons ($Pos(\{x\}), x \in \Theta$), they are less computationally expensive than belief functions, making the approximation process interesting for many applications.

Consonant approximation: Dubois and Prade [3], in particular, have extensively worked on consonant approximations of belief functions. Their work has been later considered in [4], [5]. More specifically, the notion of “outer consonant approximation” has received considerable attention in the past. Indeed, belief functions admit the following order relation: $b \leq b' \equiv \forall A \subseteq \Theta, b(A) \leq b'(A)$, called “weak inclusion”. It is then possible to define the outer consonant approximations [3] of a belief function b as those co.b.f.s co such that $co(A) \leq b(A) \forall A \subseteq \Theta$. Dubois and Prade’s work has been later extended by Baroni [6] to capacities, while, in [7], the author has provided a comprehensive description of the geometry of the set of outer consonant approximations. Particularly interesting is, for each possible maximal chain $A_1 \subset \dots \subset A_n, |A_i| = i$ of focal elements, the maximal outer consonant approximation with mass assignment: $m'(A_i) = b(A_i) - b(A_{i-1})$, which mirrors the behavior of the vertices of the credal set of probabilities dominating a belief function or a 2-alternating capacity [8], [9].

Another interesting approximation emerges in the framework of Smets’ Transferable Belief Model [10], where the “pignistic” probability $BetP(x) = \sum_{A \ni x} m_b(A)$ has a central role for decision making. The notion of “isopignistic” approximation as the unique consonant belief function whose pignistic probability is identical to that of the original b.f. b can there be defined [11], [12]. The expression of the isopignistic consonant b.f. associated with a unimodal probability density has been derived in [13]. In [14], instead, consonant belief functions are constructed from sample data using confidence sets of pignistic probabilities.

A geometric approach to approximation: in more recent times the opportunity of seeking probability or consonant approximations / transformations of belief functions by minimizing

appropriate distance functions has been explored. The author has himself introduced the notion of orthogonal projection $\pi[b]$ of a belief function onto the probability simplex [15], and studied consistent approximations of belief functions induced by classical L_p norms [16] in the space of belief functions [17]. In [18] he has shown that norm minimization can also be used to define families of geometric conditional belief functions. As to what distances are the most appropriate, Jousselme et al [19] have recently conducted a nice survey of the distance or similarity measures so far introduced in belief calculus, come out with an interesting classification, and proposed a number of generalizations of known measures. Other similarity measures between belief functions have been proposed by Shi et al [20], Jiang et al [21], and others [22], [23]. Many of these measures can be in principle employed to define conditional belief functions, or to approximate belief functions by necessity or probability measures.

As the author has recently proven [7], geometrically, consonant belief functions live in a collection of simplices or “simplicial complex”. Each maximal simplex of the consonant complex is associated with a maximal chain of nested focal elements: $\mathcal{C} = \{A_1 \subset A_2 \subset \dots \subset A_n = \Theta\}$. Computing the consonant belief function(s) at minimal distance from a given b.f. b involves therefore: 1) computing first a partial solution for each possible maximal chain; 2) selecting a global approximation among all the partial ones.

Geometric approximation, however, can be performed in different Cartesian spaces. Indeed, a belief function can be represented either by the vector of its belief values, or the vector of its mass values. We call the set of vectors of the first kind *belief space* \mathcal{B} [17], [24], and the collection of vectors of the second kind *mass space* \mathcal{M} [18]. In both cases consonant b.f.s belong to a simplicial complex. In the mass space representation, we further need to consider the fact that, because of normalization, only $N - 2$ mass values (where $N = 2^{|\Theta|}$) are sufficient to determine a belief function. Approximations can then be computed in vectors spaces or dimension $N - 1$ or $N - 2$, leading to different but related results. Clearly, any mass component $m_b(\bar{A})$, $\bar{A} \subseteq \Theta$ can be neglected in order to obtain a reduced mass vector.

Contribution: the goal of this paper is to conduct an exhaustive, analytical study of all the consonant approximations of belief functions induced by minimizing L_1 , L_2 or L_∞ distances between the consonant complex and the original belief function, in both the belief and the mass space, and in both representations of the latter. Even though we believe the resulting consonant approximations are likely to be potentially useful in practical applications, our purpose

at this stage is not to empirically compare them with existing approaches such as isopignistic function and outer approximations, but to initiate a theoretical study of the nature of consonant approximations induced by geometric distance minimization, starting with L_p norms as a stepping stone of a more extensive line of research. Our purpose is to point out their semantics in terms of degrees of belief, their mutual relationships and to analytically compare them with existing approximations. What emerges is a picture in which belief-, mass-, and pignistic-based approximations form distinct families of approximations with different semantics.

Limitations: in some cases, *improper* partial solutions (potentially including negative mass assignments) may be obtained: the set of approximations may fall partly outside the simplex of proper consonant belief functions, for a given desired chain of focal elements. This situation is not new, as outer approximations themselves include infinitely many improper solutions, while only the subset of acceptable solutions is retained. In the case of the present work, the set of all (admissible and not) partial solutions is typically much simpler to describe geometrically, in terms of simplices or polytopes. Computing the set of *proper* approximations in all cases requires significant further effort, which for reasons of clarity and length we reserve for the near future. However, conditions under which such partial solutions are admissible are here given.

Additionally, in this paper only “normalized” belief functions, i.e., b.f.s whose mass of the empty set is nil, are considered. Unnormalized b.f.s, however, play an important role in the TBM [25] as the mass of the empty set is an indicator of conflicting evidence. The analysis of the unnormalized case is also left to future work for lack of sufficient space here.

Summary of main results: as it turns out, partial approximations *in the mass space* amount to *redistributing in various ways the mass of focal elements outside the desired maximal chain to elements of the chain itself* (compare [18]). In the $(N - 1)$ -dimensional representation, the L_1 (partial) consonant approximations are such that their mass values are greater than those of the original belief function on the desired maximal chain. They form a simplex which is entirely admissible, and whose vertices are obtained by re-assigning all the mass originally outside the desired maximal chain \mathcal{C} to a single focal element of the chain itself. The barycenter of this simplex is the L_2 partial approximation, which redistributes the mass outside the chain to all the elements of \mathcal{C} on an equal basis. The simplex of L_1, \mathcal{M} approximations, in addition, exhibits interesting relations with classical outer consonant approximations. When the partial L_∞ approximation is unique it coincides with the L_2 approximation, and it is obviously admissible.

When it is not unique, it is a simplex whose vertices assign to each element of the chain (but one) the maximal mass outside the chain: this set is in general not entirely admissible.

The L_1 and L_2 partial approximations calculated when adopting a $(N-2)$ section of \mathcal{M} coincide. For each possible neglected component $\bar{A} \in \mathcal{C}$ they describe all the vertices of the simplex of L_1, \mathcal{M} partial approximations. In each such section, the L_∞ partial approximations form instead a (partly admissible) region whose size is determined by the largest mass outside the desired maximal chain. The global approximations in the L_1, L_2, L_∞ cases span the simplicial components of \mathcal{CO} whose chains minimize the sum of mass, sum of square masses, and maximal mass outside the desired maximal chain, respectively.

In the *belief space*, all L_p approximations amount to picking different representatives from the n lists of belief values: $\mathcal{L}_i = \{b(A), A \supseteq A_i, A \not\supseteq A_{i+1}\} \forall i = 1, \dots, n$. Belief functions are defined on a partially ordered set, the power set $\{A \subseteq \Theta\}$, of which a maximal chain is a maximal totally ordered subset. Therefore, given two elements of the chain $A_i \subset A_{i+1}$, there are a number of “intermediate” focal elements A which contain the latter but not the former. All partial L_p approximations in the belief space have mass $m'(A_i) = f(\mathcal{L}_i) - f(\mathcal{L}_{i-1})$, where f is a simple function of the belief values in the list \mathcal{L}_i , such as max, average, or median. Classical maximal outer and “contour-based” approximations can also be expressed in the same way. As they would all reduce to the maximal outer approximation $m'(A_i) = \min(\mathcal{L}_i) - \min(\mathcal{L}_{i-1}) = b(A_i) - b(A_{i-1})$ if the power set $\{A \subseteq \Theta\}$ was totally ordered, all these consonant approximations can be considered as generalizations of the latter. Sufficient conditions on their admissibility can be given in terms of the (partial) plausibility values of the singletons. As for global approximations, in the L_∞ case they fall on the component(s) associated with the maximal plausibility singleton(s). In the other two cases they are, for now, of more difficult interpretation.

Table (I) illustrates the behavior of the different geometric consonant approximations explored in this paper, in terms of multiplicity/admissibility/global solutions.

Paper outline: we first provide the necessary background on consonant belief functions and consonant approximation (Section II), in particular on the geometric representation of belief and mass vectors (II-B) and the geometric approach to the approximation problem (II-C). We first tackle the problem in the mass space in Section III, where we: analytically compute the approximations induced by L_1, L_2 and L_∞ norms (III-A); discuss their interpretation in terms of mass re-assignment and the relationship between the results in the mass space versus those on

	multiplicity	admissibility	global solution(s)
L_1, \mathcal{M}	simplex	entirely	$\arg \min_C \sum_{B \notin C} m_b(B)$
L_2, \mathcal{M}	point, barycenter of L_1, \mathcal{M}	yes	$\arg \min_C \sum_{B \notin C} (m_b(B))^2$
L_∞, \mathcal{M}	point / simplex	yes / not entirely	$\arg \min_C \sum_{B \notin C} m_b(B)$ / $\arg \min_C \max_{B \notin C} m_b(B)$
$L_1, \mathcal{M} \setminus \bar{A}$	point, vertex of L_1, \mathcal{M}	yes	as in L_1, \mathcal{M}
$L_2, \mathcal{M} \setminus \bar{A}$	point, equal to $L_1, \mathcal{M} \setminus \bar{A}$	yes	as in L_2, \mathcal{M}
$L_\infty, \mathcal{M} \setminus \bar{A}$	polytope	not entirely	$\arg \min_C \max_{B \notin C} m_b(B)$
L_1, \mathcal{B}	polytope	depending on partial plausibilities of singletons	not easy to interpret
L_2, \mathcal{B}	point	depending on partial plausibilities of singletons	not known
L_∞, \mathcal{B}	polytope	depending on plausibilities of singletons	$\arg \max_C pl(A_1)$

TABLE I

PROPERTIES OF THE GEOMETRIC CONSONANT APPROXIMATIONS STUDIED HERE, IN TERMS OF MULTIPLICITY AND
ADMISSIBILITY OF PARTIAL SOLUTIONS, AND THE RELATED GLOBAL SOLUTIONS.

its sections (III-B); analyze the computability and admissibility of global approximations (III-C); study the relation of the obtained approximations with classical outer consonant approximations (III-D); and finally, illustrate the results in the significant ternary case (III-E).

In the second part of the paper we analyze the L_p approximation problem in the belief space (Section IV). Again, we compute the approximations induced by L_1 (IV-A), L_2 (IV-B) and L_∞ (IV-C) norms, respectively; we propose a comprehensive view of all approximations in the belief space via lists of belief values determined by the desired maximal chain (Section IV-D); we illustrate them with the help of the usual ternary example (IV-E), and draw some conclusions on the behavior of geometric approximations in the belief and mass space (IV-F).

To improve readability, all proofs are collected in the Appendix.

II. GEOMETRY OF CONSONANT BELIEF FUNCTIONS

A. Consonant belief functions as necessity measures

A *basic probability assignment* (b.p.a.) over a finite set (*frame of discernment* [1]) Θ is a function $m_b : 2^\Theta \rightarrow [0, 1]$ on its power set $2^\Theta = \{A \subseteq \Theta\}$ such that $m_b(\emptyset) = 0$, $\sum_{A \subseteq \Theta} m_b(A) =$

1. Subsets of Θ associated with non-zero values of m_b are called *focal elements*. The *belief function* $b : 2^\Theta \rightarrow [0, 1]$ associated with a basic probability assignment m_b on Θ is defined as: $b(A) = \sum_{B \subseteq A} m_b(B)$. A dual mathematical representation of the evidence encoded by a belief function b is the *plausibility function* (pl.f.) $pl_b : 2^\Theta \rightarrow [0, 1]$, where the plausibility value $pl_b(A)$ of an event A is given by $pl_b(A) \doteq 1 - b(A^c) = 1 - \sum_{B \subseteq A^c} m_b(B) = \sum_{B \cap A \neq \emptyset} m_b(B)$, and expresses the amount of evidence *not against* A . A probability function is simply a special belief function assigning non-zero masses to singletons only (*Bayesian b.f.*): $m_b(A) = 0$ if $|A| > 1$. A belief function is said, instead, to be *consonant* if its focal elements are nested, and form a totally ordered chain $A_1 \subset \dots \subset A_m$. Consonant b.f.s are characterized by the fact that $pl_b(A) = \max_{x \in A} pl_b(x)$ for all non-empty $A \subseteq \Theta$, where $pl_b(x)$ is called *contour function*.

Consonant belief functions constitute the link between the theory of belief functions and possibility theory [2]. While the former relies on belief functions to represent uncertainty, the latter is centered on the notion of “possibility measure”. A *possibility measure* on Θ is a function $Pos : 2^\Theta \rightarrow [0, 1]$ such that $Pos(\emptyset) = 0$, $Pos(\Theta) = 1$ and $Pos(\bigcup_i A_i) = \sup_i Pos(A_i)$ for any family of subsets $\{A_i | A_i \in 2^\Theta, i \in I\}$ where I is an arbitrary set index. Each possibility measure is uniquely characterized by a *membership function* or *possibility distribution* $\pi : \Theta \rightarrow [0, 1]$ s.t. $\pi(x) \doteq Pos(\{x\})$ via the formula $Pos(A) = \sup_{x \in A} \pi(x)$. Dually, $Nec(A) = 1 - Pos(A^c)$ is called *necessity measure*. From the fact that for consonant b.f.s $pl_b(A) = \max_{x \in A} pl_b(x)$ for all A , it follows that [1] the plausibility function pl_b associated with a belief function b is a possibility measure iff b is consonant, in which case $\pi(x) = pl_b(x)$. Equivalently, a b.f. b is a necessity measure iff b is consonant.

B. Geometric representation of uncertainty measures

1) *Belief space representation*: given a frame Θ , each belief function $b : 2^\Theta \rightarrow [0, 1]$ is completely specified by its $N - 2$ belief values $\{b(A), \emptyset \subsetneq A \subsetneq \Theta\}$, $N \doteq 2^n$ ($n \doteq |\Theta|$), (as $b(\emptyset) = 0$, $b(\Theta) = 1$ for all b.f.s), and can therefore be represented as a point of \mathbb{R}^{N-2} . Once introduced a set of coordinate axes $\{\vec{v}_A, \emptyset \subsetneq A \subsetneq \Theta\}$ in \mathbb{R}^{N-2} , a belief function b can be represented by the vector $\vec{b} = \sum_{\emptyset \subsetneq A \subsetneq \Theta} b(A) \vec{v}_A$. If we denote by b_A the *categorical* [10] belief function (also called “unanimity game” [26]) assigning all the mass to a single subset $A \subseteq \Theta$, we can prove that ([17], [24]) the set of points of \mathbb{R}^{N-2} which correspond to a b.f. or “belief space” \mathcal{B} coincides with the convex closure of all the vectors representing categorical

belief functions: $\mathcal{B} = Cl(\vec{b}_A, \emptyset \subsetneq A \subseteq \Theta)$, where Cl denotes the convex closure operator: $Cl(\vec{b}_1, \dots, \vec{b}_k) = \left\{ \vec{b} \in \mathcal{B} : \vec{b} = \alpha_1 \vec{b}_1 + \dots + \alpha_k \vec{b}_k, \sum_i \alpha_i = 1, \alpha_i \geq 0 \forall i \right\}$.

The belief space \mathcal{B} is a simplex¹ [17], and each vector $\vec{b} \in \mathcal{B}$ representing a belief function b can be written as a convex sum as (see also [26]):

$$\vec{b} = \sum_{\emptyset \subsetneq A \subseteq \Theta} m_b(A) \vec{b}_A. \quad (1)$$

The set \mathcal{P} of all Bayesian b.f.s is the simplex² $\mathcal{P} = Cl(\vec{b}_x, x \in \Theta)$.

2) *Mass space representation*: in the same way, each belief function is uniquely associated with the related set of mass values $\{m_b(A), \emptyset \subsetneq A \subseteq \Theta\}$ (Θ this time included). It can therefore be seen also as a point of \mathbb{R}^{N-1} , the vector \vec{m}_b of its $N - 1$ mass components:

$$\vec{m}_b = \sum_{\emptyset \subsetneq A \subseteq \Theta} m_b(A) \vec{m}_A, \quad (2)$$

where \vec{m}_A is the vector of mass values of the categorical b.f. b_A : $\vec{m}_A(A) = 1$, $\vec{m}_A(B) = 0 \forall B \neq A$. Note that in \mathbb{R}^{N-1} $\vec{m}_\Theta = [0, \dots, 0, 1]'$ and cannot be neglected. However, the mass of any focal element \bar{A} is determined by all the other masses in virtue of the normalization constraint. Therefore, we can also choose to represent b.p.a.s as vectors of \mathbb{R}^{N-2} of the form:

$$\vec{m}_b = \sum_{\emptyset \subsetneq A \subseteq \Theta, A \neq \bar{A}} m_b(A) \vec{m}_A, \quad (3)$$

where the component \bar{A} is neglected. This leads to two possible approaches to consonant approximation in the mass space. We will consider both representations in the following.

Whatever the chosen representation, the collection \mathcal{M} of vectors of the Cartesian space which represent valid basic probability assignments is also a simplex, called the *mass space*.

3) *Binary example*: in the case of a frame of discernment containing only two elements, $\Theta_2 = \{x, y\}$, each b.f. $b : 2^{\Theta_2} \rightarrow [0, 1]$ is completely determined by its mass values $m_b(x)$, $m_b(y)$, as $m_b(\Theta) = 1 - m_b(x) - m_b(y)$ and $m_b(\emptyset) = 0$. We can therefore collect them in a vector of $\mathbb{R}^{N-2} = \mathbb{R}^2$ (since $N = 2^2 = 4$), $\vec{m}_b = \vec{b} = [m_b(x) = b(x), m_b(y) = b(y)]' \in \mathbb{R}^2$:

¹ An n -dimensional *simplex* is the convex closure $Cl(x_1, \dots, x_{n+1})$ of $n + 1$ affinely independent [17] points x_1, \dots, x_{n+1} of the Euclidean space \mathbb{R}^n . The *faces* of an n -dimensional simplex are all the possible simplices generated by a subset of its vertices, i.e. $Cl(x_{j_1}, \dots, x_{j_k})$ with $\{j_1, \dots, j_k\} \subset \{1, \dots, n + 1\}$.

²With a harmless abuse of notation we denote the categorical b.f. associated with a singleton x by b_x instead of $b_{\{x\}}$, and write $m_b(x), b(x), pl_b(x)$ instead of $m_b(\{x\}), b(\{x\}), pl_b(\{x\})$.

the $(N - 2)$ -dimensional version of the mass space coincides in this case with the belief space. Since $m_b(x) \geq 0$, $m_b(y) \geq 0$, and $m_b(x) + m_b(y) \leq 1$ we can easily infer that the set $\mathcal{B}_2 = \mathcal{M}_2$

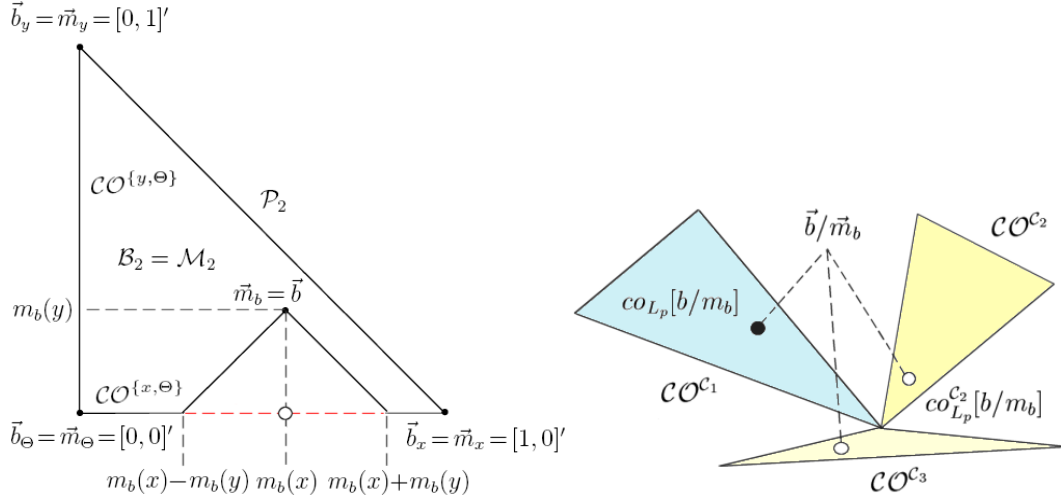


Fig. 1. Left: the mass space \mathcal{M}_2 for a binary frame is a triangle in \mathbb{R}^2 whose vertices are the mass vectors associated with the categorical belief functions focused on $\{x\}$, $\{y\}$ and Θ : $\vec{m}_x, \vec{m}_y, \vec{m}_\Theta$. The belief space \mathcal{B}_2 coincides with \mathcal{M}_2 when $\Theta = \{x, y\}$. Consonant b.f.s live in the union of the segments $\mathcal{CO}^{\{x, \Theta\}} = Cl(\vec{m}_x, \vec{m}_\Theta)$ and $\mathcal{CO}^{\{y, \Theta\}} = Cl(\vec{m}_y, \vec{m}_\Theta)$. The unique $L_1 = L_2$ consonant approximation (circle) and the set of L_∞ consonant approximations (dashed segment) on $\mathcal{CO}^{\{x, \Theta\}}$ are shown. Right: to minimize the distance of a point from a simplicial complex, we need to find all the partial solutions (7) on all the simplices in the complex (empty circles), and compare these partial solutions to select a global one (black circle).

of all the possible basic probability assignments (belief functions) on Θ_2 can be depicted as the triangle in the Cartesian plane of Figure 1-left, whose vertices are the points $\vec{b}_\Theta = \vec{m}_\Theta = [0, 0]'$, $\vec{b}_x = \vec{m}_x = [1, 0]'$, $\vec{b}_y = \vec{m}_y = [0, 1]'$, which correspond respectively to the vacuous belief function b_Θ ($m_{b_\Theta}(\Theta) = 1$), the Bayesian b.f. b_x with $m_{b_x}(x) = 1$, and the Bayesian b.f. b_y with $m_{b_y}(y) = 1$. The region \mathcal{P}_2 of all Bayesian b.f.s on Θ_2 is the diagonal line segment $Cl(\vec{m}_x, \vec{m}_y) = Cl(\vec{b}_x, \vec{b}_y)$. On $\Theta_2 = \{x, y\}$ consonant belief functions can have as chain of focal elements either $\{\{x\} \subset \Theta_2\}$ or $\{\{y\} \subset \Theta_2\}$. Therefore, they live in the union of two segments (see Figure 1-left): $\mathcal{CO}_2 = \mathcal{CO}^{\{x, \Theta\}} \cup \mathcal{CO}^{\{y, \Theta\}} = Cl(\vec{m}_x, \vec{m}_\Theta) \cup Cl(\vec{m}_y, \vec{m}_\Theta)$.

C. The consonant approximation problem

1) *Approximation in the consonant complex*: the geometry of consonant belief functions in the general case can be described through the notion of “simplicial complex” [27]. A *simplicial complex* is a collection Σ of simplices of arbitrary dimensions such: 1) if a simplex belongs to Σ ,

then all its faces of any dimension belong to Σ ; 2) the intersection of any two simplices is a face of both. It can be proven that [7] the region \mathcal{CO}_B of consonant belief functions in the belief space is a simplicial complex, the union of a collection of (maximal) simplices, each of them associated with a maximal chain $\mathcal{C} = \{A_1 \subset \dots \subset A_n\}$, $|A_i| = i$ of subsets of the frame Θ : $\mathcal{CO}_B = \bigcup_{\mathcal{C}=\{A_1 \subset \dots \subset A_n\}} Cl(\vec{b}_{A_1}, \dots, \vec{b}_{A_n})$. Analogously, the region \mathcal{CO}_M of consonant belief functions in the mass space \mathcal{M} is the simplicial complex: $\mathcal{CO}_M = \bigcup_{\mathcal{C}=\{A_1 \subset \dots \subset A_n\}} Cl(\vec{m}_{A_1}, \dots, \vec{m}_{A_n})$.

Given a belief function b , we call *consonant approximation of b induced by a distance function d in \mathcal{M}/\mathcal{B}* the b.f.(s) $co_{\mathcal{M}/\mathcal{B},d}[m_b/b]$ which minimize(s) the distance $d(\vec{m}_b, \mathcal{CO}_M)/d(\vec{b}, \mathcal{CO}_B)$ between \vec{m}_b/\vec{b} and the consonant simplicial complex in \mathcal{M}/\mathcal{B} :

$$co_{\mathcal{M},d}[m_b] = \arg \min_{\vec{m}_{co} \in \mathcal{CO}_M} d(\vec{m}_b, \vec{m}_{co}) / co_{\mathcal{B},d}[b] = \arg \min_{\vec{c}o \in \mathcal{CO}_B} d(\vec{b}, \vec{c}o). \quad (4)$$

2) *Choice of norm*: as we have seen above, a close relation exists between consonant belief functions and L_p norms, in particular the L_∞ one. Consonant b.f.s are the counterparts of necessity measures in the theory of evidence, so that their plausibility functions are possibility measures, which in turn are inherently related to L_∞ as $Pos(A) = \max_{x \in A} Pos(x)$. It makes therefore sense to conjecture that a consonant transformation obtained by picking as distance function d in (4) one of the classical L_p norms would be meaningful. For vectors $\vec{m}_b, \vec{m}_{b'} \in \mathcal{M}$ representing the b.p.a.s of two belief functions b, b' , they read as:

$$\begin{aligned} \|\vec{m}_b - \vec{m}_{b'}\|_{L_1} &\doteq \sum_{\emptyset \subsetneq B \subseteq \Theta} |m_b(B) - m_{b'}(B)|; & \|\vec{m}_b - \vec{m}_{b'}\|_{L_2} &\doteq \sqrt{\sum_{\emptyset \subsetneq B \subseteq \Theta} (m_b(B) - m_{b'}(B))^2}; \\ \|\vec{m}_b - \vec{m}_{b'}\|_{L_\infty} &\doteq \max_{\emptyset \subsetneq B \subseteq \Theta} |m_b(B) - m_{b'}(B)|, \end{aligned} \quad (5)$$

while the same norms in the belief space read as:

$$\begin{aligned} \|\vec{b} - \vec{b}'\|_{L_1} &\doteq \sum_{\emptyset \subsetneq B \subseteq \Theta} |b(B) - b'(B)|; & \|\vec{b} - \vec{b}'\|_{L_2} &\doteq \sqrt{\sum_{\emptyset \subsetneq B \subseteq \Theta} (b(B) - b'(B))^2}; \\ \|\vec{b} - \vec{b}'\|_{L_\infty} &\doteq \max_{\emptyset \subsetneq B \subseteq \Theta} |b(B) - b'(B)|. \end{aligned} \quad (6)$$

In recent times, L_p norms have been successfully employed in the probability transformation problem [15] and for conditioning [28], [18]. For instance, the L_2 probability transformation induces the so-called ‘‘orthogonal projection’’ of b onto \mathcal{P} [15].

Clearly, however, a number of other norms can be introduced in the framework of belief functions and used to define consonant (or Bayesian) approximations. For instance, generalizations to

belief functions of the classical Kullback-Leibler divergence of two probability distributions P, Q ($D_{KL}(P|Q) = \int_{-\infty}^{\infty} p(x) \log(\frac{p(x)}{q(x)}) dx$) or other measures based on information theory such as fidelity and entropy-based norms [29] can be studied. Many other similarity measures have indeed been proposed ([20], [21], [22], [23]). The application to the approximation problem of similarity measures more specific to belief functions or inspired by classical probability is an enormous task, of which this paper can be seen as just a first step.

3) *Distance of a point from a simplicial complex*: as the consonant complex \mathcal{CO} is a *collection* of simplices which generate distinct linear spaces (in both the belief and the mass space), solving the consonant approximation problem involves finding first a number of partial solutions:

$$co_{\mathcal{M}, L_p}^{\mathcal{C}}[m_b] = \arg \min_{\vec{m}_{co} \in \mathcal{CO}_{\mathcal{M}}^{\mathcal{C}}} \|\vec{m}_b - \vec{m}_{co}\|_{L_p} / co_{\mathcal{B}, L_p}^{\mathcal{C}}[b] = \arg \min_{\vec{co} \in \mathcal{CO}_{\mathcal{B}}^{\mathcal{C}}} \|\vec{b} - \vec{co}\|_{L_p} \quad (7)$$

(see Figure 1-right), one for each maximal chain \mathcal{C} of subsets of Θ . Then, the distance of b from all such partial solutions has to be assessed in order to select a global optimal approximation.

III. CONSONANT APPROXIMATION IN THE MASS SPACE

Let us then compute first the analytical form of all L_p consonant approximations in the mass space, in both its \mathbb{R}^{N-1} and \mathbb{R}^{N-2} forms (see Section II-B, Equations (2) and (3)). We start by analyzing the difference vector $\vec{m}_b - \vec{m}_{co}$ between the original mass vector and its approximation. In the complete, $(N-1)$ -dimensional version \mathcal{M} of the mass space (see Equation (2)), the mass vector associated with an arbitrary consonant belief function co with maximal chain of focal elements \mathcal{C} reads as $\vec{m}_{co} = \sum_{A \in \mathcal{C}} m_{co}(A) \vec{m}_A$. The difference vector is therefore:

$$\vec{m}_b - \vec{m}_{co} = \sum_{A \in \mathcal{C}} (m_b(A) - m_{co}(A)) \vec{m}_A + \sum_{B \notin \mathcal{C}} m_b(B) \vec{m}_B. \quad (8)$$

When picking a $(N-2)$ -dimensional section of the mass space (see Equation (3)), instead, we need to distinguish whether the missing focal element \bar{A} is an element of the desired maximal chain \mathcal{C} or not. In the former case, the mass vector associated with the same, arbitrary consonant b.f. co with maximal chain \mathcal{C} is $\vec{m}_{co} = \sum_{A \in \mathcal{C}, A \neq \bar{A}} m_{co}(A) \vec{m}_A$, and the difference vector:

$$\vec{m}_b - \vec{m}_{co} = \sum_{A \in \mathcal{C}, A \neq \bar{A}} (m_b(A) - m_{co}(A)) \vec{m}_A + \sum_{B \notin \mathcal{C}} m_b(B) \vec{m}_B. \quad (9)$$

If, instead, the missing component is *not* an element of \mathcal{C} , the arbitrary consonant b.f. is

$\vec{m}_{co} = \sum_{A \in \mathcal{C}} m_{co}(A) \vec{m}_A$, while the difference vector becomes:

$$\vec{m}_b - \vec{m}_{co} = \sum_{A \in \mathcal{C}} (m_b(A) - m_{co}(A)) \vec{m}_A + \sum_{B \notin \mathcal{C}, B \neq \bar{A}} m_b(B) \vec{m}_B. \quad (10)$$

One can observe that, since (10) coincides with (8) (factoring out the missing component \bar{A}) minimizing the L_p norm of the difference vector in a $(N - 2)$ -dimensional section of the mass space which leaves out a focal element *outside* the desired maximal chain yields *the same results as in the complete mass space*³. Therefore, in what follows we only consider consonant approximations in $(N - 2)$ -dimensional sections obtained by excluding a component associated with an element $\bar{A} \in \mathcal{C}$ of the desired maximal chain.

In the following we denote by $\mathcal{CO}_{\mathcal{M} \setminus \bar{A}, L_p}^{\mathcal{C}}[m_b]$ (uppercase) the set of partial L_p approximations of b with maximal chain \mathcal{C} in the section of the mass space which excludes $\bar{A} \in \mathcal{C}$. We drop the superscript \mathcal{C} for global solutions, drop $\setminus \bar{A}$ for solutions in the complete mass space, and use $co_{\mathcal{M} \setminus \bar{A}, L_p}^{\mathcal{C}}[m_b]$ (lowercase) for pointwise solutions and the barycenters of sets of solutions.

A. Results of L_p consonant approximation in the mass space

Minimizing the L_1 norm of the difference vectors (8), (9) yields the following result.

Theorem 1: Given a belief function $b : 2^{\Theta} \rightarrow [0, 1]$ with b.p.a. m_b , the partial L_1 consonant approximations of b with maximal chain of focal elements \mathcal{C} in the complete mass space \mathcal{M} is the set of co.b.f.s co with chain \mathcal{C} such that $m_{co}(A) \geq m_b(A) \forall A \in \mathcal{C}$. They form a simplex:

$$\mathcal{CO}_{\mathcal{M}, L_1}^{\mathcal{C}}[m_b] = Cl(\vec{m}_{L_1}^{\bar{A}}[m_b], \bar{A} \in \mathcal{C}), \quad (11)$$

whose vertices have b.p.a.:

$$\vec{m}_{L_1}^{\bar{A}}[m_b](A) = \begin{cases} m_b(A) + \sum_{B \notin \mathcal{C}} m_b(B) & A = \bar{A}, \\ m_b(A) & A \in \mathcal{C}, A \neq \bar{A}, \end{cases} \quad (12)$$

and whose barycenter has mass assignment:

$$co_{\mathcal{M}, L_1}^{\mathcal{C}}[m_b](A) = m_b(A) + \frac{1}{n} \sum_{B \notin \mathcal{C}} m_b(B) \quad \forall A \in \mathcal{C}. \quad (13)$$

³The absence of the missing component $m_b(\bar{A})$ in (10) implies in fact a small difference when it comes to the L_{∞} approximation: Theorem 3 and Equation (14) for the vertices of the polytope of L_{∞} approximations remain valid as long as we replace $\max_{B \notin \mathcal{C}} m_b(B)$ with $\max_{B \notin \mathcal{C}, B \neq \bar{A}} m_b(B)$.

The set of global L_1 approximations of b is the union of the simplices (11) associated with the maximal chain(s) which maximize(s) their total original mass:

$$\mathcal{CO}_{\mathcal{M},L_1}[m_b] = \bigcup_{\mathcal{C} \in \arg \max_{\mathcal{C}} \sum_{A \in \mathcal{C}} m_b(A)} \mathcal{CO}_{\mathcal{M},L_1}^{\mathcal{C}}[m_b].$$

The partial L_1 consonant approximation $co_{\mathcal{M} \setminus \bar{A}, L_1}^{\mathcal{C}}[m_b]$ of b in the section of the mass space \mathcal{M} with missing component $\bar{A} \in \mathcal{C}$ is unique, and has b.p.a. (12). The global such approximation(s) are also associated with the maximal chains $\arg \max_{\mathcal{C}} \sum_{A \in \mathcal{C}} m_b(A)$.

In order to find the L_2 consonant approximation(s) in \mathcal{M} , instead, it is convenient to recall that the minimal L_2 distance between a point and a vector space is attained by the point of the vector space V such that the difference vector is orthogonal to all the generators \vec{g}_i of V :

$$\arg \min_{\vec{q} \in V} \|\vec{p} - \vec{q}\|_{L_2} = \hat{q} \in V : \langle \vec{p} - \hat{q}, \vec{g}_i \rangle = 0 \quad \forall i$$

whenever $\vec{p} \in \mathbb{R}^m$, $V = \text{span}(\{\vec{g}_i, i\})$. Instead of minimizing the L_2 norm of the difference vector $\|\vec{m}_b - \vec{m}_{co}\|_{L_2}$ we impose a condition of orthogonality between the difference vector itself $\vec{m}_b - \vec{m}_{co}$ and each component $\mathcal{CO}_{\mathcal{M}}^{\mathcal{C}}$ of the consonant complex in the mass space.

Theorem 2: Given a belief function $b : 2^{\Theta} \rightarrow [0, 1]$ with b.p.a. m_b , the partial L_2 consonant approximation of b with maximal chain of focal elements \mathcal{C} in the complete mass space \mathcal{M} has mass assignment (13): $co_{\mathcal{M}, L_2}^{\mathcal{C}}[m_b] = co_{\mathcal{M}, L_1}^{\mathcal{C}}[m_b]$. The set of all global L_2 approximations is:

$$\mathcal{CO}_{\mathcal{M}, L_2}[m_b] = \bigcup_{\mathcal{C} \in \arg \min_{\mathcal{C}} \sum_{B \notin \mathcal{C}} (m_b(B))^2} co_{\mathcal{M}, L_2}^{\mathcal{C}}[m_b],$$

i.e., the union of the partial solutions associated with maximal chains of focal elements which minimize the sum of square masses outside the chain.

The partial L_2 consonant approximation of b in the section of the mass space with missing component $\bar{A} \in \mathcal{C}$ is unique, and coincides with the L_1 partial consonant approximation in the same section (12): $co_{\mathcal{M} \setminus \bar{A}, L_2}^{\mathcal{C}}[m_b] = co_{\mathcal{M} \setminus \bar{A}, L_1}^{\mathcal{C}}[m_b]$.

The L_2 global approximations in the section form the union of the related partial approximations associated with the maximal chains: $\arg \min_{\mathcal{C}} \sum_{B \notin \mathcal{C}} (m_b(B))^2$. Note that global solutions in the L_1 and L_2 cases fall in general onto different simplicial components of $\mathcal{CO}_{\mathcal{M}}$.

Theorem 3: Given a belief function $b : 2^{\Theta} \rightarrow [0, 1]$ with b.p.a. m_b , the partial L_{∞} consonant approximations of b with maximal chain of focal elements \mathcal{C} in the complete mass space \mathcal{M} can form either a simplex: $\mathcal{CO}_{\mathcal{M}, L_{\infty}}^{\mathcal{C}}[m_b] = Cl(\vec{m}_{L_{\infty}}^{\bar{A}}[m_b], \bar{A} \in \mathcal{C})$ whose vertices have b.p.a.:

$$\vec{m}_{L_\infty}^{\bar{A}}[m_b](A) = \begin{cases} m_b(A) + \max_{B \notin \mathcal{C}} m_b(B) & A \in \mathcal{C}, A \neq \bar{A}, \\ m_b(\bar{A}) + \max_{B \notin \mathcal{C}} m_b(B) + \left(\sum_{B \notin \mathcal{C}} m_b(B) - n \max_{B \notin \mathcal{C}} m_b(B) \right) & A = \bar{A}, \end{cases} \quad (14)$$

when the belief function to approximate is such that:

$$\max_{B \notin \mathcal{C}} m_b(B) \geq \frac{1}{n} \sum_{B \notin \mathcal{C}} m_b(B), \quad (15)$$

or reduce, when the opposite is true, to a single consonant belief function, the barycenter of the above simplex, located on the partial L_2 approximation (and barycenter of the L_1 partial approximations) (13). When (15) holds, the global L_∞ consonant approximations are associated with the maximal chain(s) of focal elements:

$$\arg \min_{\mathcal{C}} \max_{B \notin \mathcal{C}} m_b(B); \quad (16)$$

otherwise they correspond to the maximal chains: $\arg \min_{\mathcal{C}} \sum_{B \notin \mathcal{C}} m_b(B)$. The partial L_∞ consonant approximations of b in the section of the mass space \mathcal{M} with missing component $\bar{A} \in \mathcal{C}$ form the set $\mathcal{CO}_{\mathcal{M} \setminus \bar{A}, L_\infty}^{\mathcal{C}}[m_b]$ whose elements have b.p.a. m_{co} such that:

$$m_b(A) - \max_{B \notin \mathcal{C}} m_b(B) \leq m_{co}(A) \leq m_b(A) + \max_{B \notin \mathcal{C}} m_b(B) \quad \forall A \in \mathcal{C}, A \neq \bar{A}. \quad (17)$$

Its barycenter reassigns all the mass originally outside the desired maximal chain \mathcal{C} to \bar{A} , leaving the masses of the other elements of the chain untouched (Equation (12)):

$$co_{\mathcal{M} \setminus \bar{A}, L_\infty}^{\mathcal{C}}[m_b] = co_{\mathcal{M} \setminus \bar{A}, L_2}^{\mathcal{C}}[m_b] = \vec{m}_{L_1}^{\bar{A}}[m_b].$$

The related global approximations of b are associated with the optimal chain(s) (16).

B. Semantics of partial consonant approximations in \mathcal{M}

1) $N - 1$ representation: summarizing, the partial L_p approximations of an arbitrary mass function m_b in the complete mass space \mathcal{M} are:

$$\begin{aligned} \mathcal{CO}_{\mathcal{M}, L_1}^{\mathcal{C}}[m_b] &= Cl(\vec{m}_{L_1}^{\bar{A}}[m_b], \bar{A} \in \mathcal{C}) = \left\{ co \in \mathcal{CO}_{\mathcal{M}}^{\mathcal{C}} : m_{co}(A) \geq m_b(A) \forall A \in \mathcal{C} \right\}; \\ \mathcal{CO}_{\mathcal{M}, L_2}^{\mathcal{C}}[m_b] &= co_{\mathcal{M}, L_1}^{\mathcal{C}}[m_b] = co \in \mathcal{CO}_{\mathcal{M}}^{\mathcal{C}} : m_{co}(A) = m_b(A) + \frac{1}{n} \sum_{B \notin \mathcal{C}} m_b(B), \\ \mathcal{CO}_{\mathcal{M}, L_\infty}^{\mathcal{C}}[m_b] &= Cl(\vec{m}_{L_\infty}^{\bar{A}}, \bar{A} \in \mathcal{C}) \end{aligned} \quad (18)$$

if (15) holds, otherwise simply $co_{\mathcal{M}, L_\infty}^{\mathcal{C}}[m_b] = co_{\mathcal{M}, L_2}^{\mathcal{C}}[m_b] = co_{\mathcal{M}, L_1}^{\mathcal{C}}[m_b]$.

We can observe that, for each desired maximal chain of focal elements \mathcal{C} :

- 1) the L_1 partial approximations of b are those consonant b.f.s whose mass assignment *dominates that of b over all the elements of the chain*;
- 2) this set is a fully admissible simplex, whose vertices are obtained by *re-assigning all the mass outside the desired chain to a single focal element of the chain itself* (see (12));
- 3) its barycenter coincides with the L_2 partial approximation with the same chain, which redistributes the original mass of focal elements outside the chain *to all the elements of the chain on an equal basis* (13);
- 4) when the partial L_∞ approximation is unique, it coincides with the L_2 approximation and the barycenter of the L_1 approximations;
- 5) when it is not unique, it is a simplex whose vertices assign to each element of the chain (but one) *the maximal mass outside the chain*, and whose barycenter is still the L_2 approximation.

Note that the simplex of L_∞ partial solutions (point 5)) may fall outside the simplex of consonant b.f.s with the same chain, therefore some of those approximations are not admissible.

2) $N - 2$ representation: when adopting a $(N - 2)$ -dimensional section $\mathcal{M} \setminus \bar{A}$ of the mass space, instead, the partial L_p approximations are:

$$\begin{aligned} \text{co}_{\mathcal{M} \setminus \bar{A}, L_1}^{\mathcal{C}}[m_b] &= \text{co}_{\mathcal{M} \setminus \bar{A}, L_2}^{\mathcal{C}}[m_b] = \text{co}_{\mathcal{M} \setminus \bar{A}, L_\infty}^{\mathcal{C}}[m_b] : \begin{cases} m_{\text{co}}(A) = m_b(A), A \in \mathcal{C}, A \neq \bar{A} \\ m_{\text{co}}(\bar{A}) = m_b(\bar{A}) + \sum_{B \notin \mathcal{C}} m_b(B); \end{cases} \\ \mathcal{CO}_{\mathcal{M} \setminus \bar{A}, L_\infty}^{\mathcal{C}}[m_b] &= \left\{ \text{co} \in \mathcal{CO}_{\mathcal{M}}^{\mathcal{C}} : |m_{\text{co}}(A) - m_b(A)| \leq \max_{B \notin \mathcal{C}} m_b(B) \quad \forall A \in \mathcal{C}, A \neq \bar{A} \right\}. \end{aligned} \quad (19)$$

Therefore, for each desired maximal chain \mathcal{C} :

- the L_1 and L_2 partial approximations are uniquely determined, and coincide with the barycenter of the set of L_∞ partial approximations;
- their semantic is straightforward: all the mass outside the chain is re-assigned to a single focal element of the chain $\bar{A} \in \mathcal{C}$;
- the set of L_∞ (partial) approximations falls entirely inside the simplex of admissible consonant b.f.s only if each focal element in the desired chain has mass greater than all focal elements outside the chain: $\min_{A \in \mathcal{C}} m_b(A) \geq \max_{B \notin \mathcal{C}} m_b(B)$;
- it forms a generalized rectangle in the mass space \mathcal{M} , whose size is determined by the

largest mass outside the desired maximal chain.

3) *Comparison and general overview of the results:* as a general trait, approximations in the mass space amount to some redistribution of the original mass to focal elements of the desired maximal chain. The relationships between the different L_p consonant approximations in the full mass space and those in any arbitrary $(N - 2)$ -dimensional section of \mathcal{M} are summarized in the diagram of Figure 2: while being both acceptable geometric representations of mass vectors, the two approaches generate different but related results.

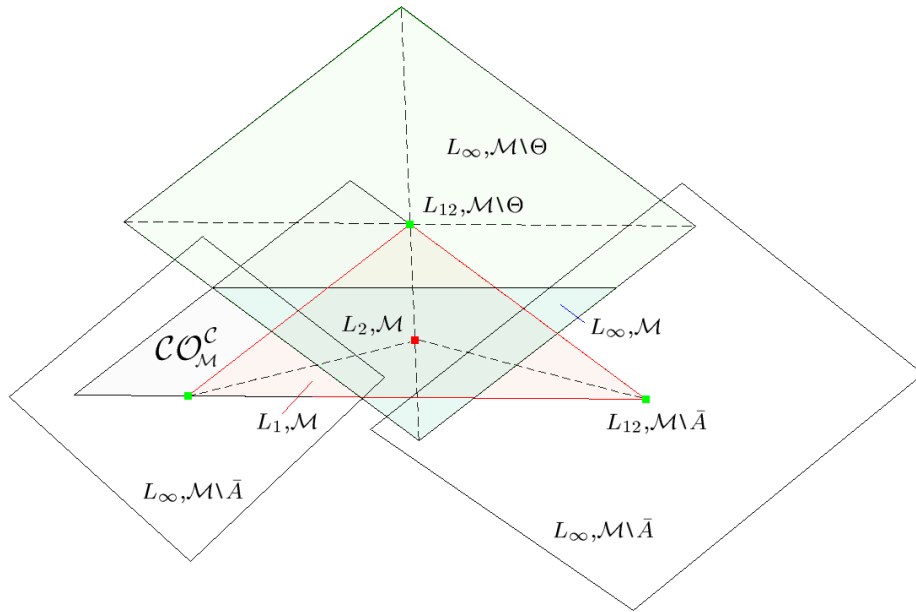


Fig. 2. Graphical representation of the relationships between the different (partial) L_p consonant approximations with desired maximal chain \mathcal{C} , in the related simplex $\mathcal{CO}_{\mathcal{M}}^{\mathcal{C}}$ of the consonant complex \mathcal{CO} . Approximations in the full mass space \mathcal{M} and approximations computed in a $(N - 2)$ -dimensional section with missing component $\bar{A} \in \mathcal{C}$ are compared. In the latter case, the special case $\bar{A} = \Theta$ is highlighted.

By Equation (19), the L_1/L_2 approximations in all the $(N - 2)$ -dimensional sections of the mass space (and the barycenters of the related sets of L_{∞} approximations) track all the vertices of the L_1 simplex in \mathcal{M} . As it is quite arbitrary to select the component \bar{A} to neglect, the latter simplex (and its barycenter) seem to play a privileged role.

L_{∞} approximations in any such sections are not entirely admissible, and do not show a particular relation with the simplex of L_1, \mathcal{M} solutions. It remains to be determined the relation between the L_{∞} partial solutions in the full mass space and those computed in its sections $\mathcal{M} \setminus \bar{A}$.

Theorem 4: Given a belief function $b : 2^{\Theta} \rightarrow [0, 1]$ with b.p.a. m_b and a maximal chain

of focal elements \mathcal{C} , the partial L_∞ consonant approximations of b in the complete mass space $\mathcal{CO}_{\mathcal{M}, L_\infty}^{\mathcal{C}}[m_b]$ are not necessarily partial L_∞ approximations $\mathcal{CO}_{\mathcal{M} \setminus \bar{A}, L_\infty}^{\mathcal{C}}[m_b]$ in the section excluding \bar{A} . However, for all $\bar{A} \in \mathcal{C}$ the two sets of approximations share the vertex (14).

Notice that in the ternary case ($n = 3$) condition (49) $\max_{B \notin \mathcal{C}} m_b(B) > \frac{1}{n-2} \sum_{B \notin \mathcal{C}} m_b(B)$ (see the proof of Theorem 4 in the Appendix) becomes $\max_{B \notin \mathcal{C}} m_b(B) > \sum_{B \notin \mathcal{C}} m_b(B)$ which is impossible. Therefore: if $|\Theta| = 3$ the set of L_∞ partial consonant approximations of a b.f. b in the full mass space is a subset of the set of its L_∞ partial consonant approximations in the section of \mathcal{A} which neglects the component \bar{A} , for any choice of $\bar{A} \in \mathcal{C}$ (see Section III-E).

C. Interpretation, computability and admissibility of global solutions

As far as *global* solutions are concerned, we can observe the following facts:

- in the L_1 case, in both the $(N - 1)$ - and $(N - 2)$ -dimensional representations, the optimal chain(s) are $\arg \min_{\mathcal{C}} \sum_{B \notin \mathcal{C}} m_b(B) = \arg \max_{\mathcal{C}} \sum_{A \in \mathcal{C}} m_b(A)$;
- in the L_2 case, again in both representations, these are $\arg \min_{\mathcal{C}} \sum_{B \notin \mathcal{C}} (m_b(B))^2$;
- in the L_∞ case, the optimal chain(s) are $\arg \min_{\mathcal{C}} \max_{B \notin \mathcal{C}} m_b(B)$ unless the approximation is unique in the full mass space, in which case the optimal chains are as in the L_1 case.

While the L_2 global approximation is of difficult interpretation, both the L_1 and L_∞ solutions are supported by an intuitive rationale, as they are associated with the chains which minimize the total/maximal mass originally outside the desired maximal chain.

1) *Admissibility of partial and global solutions*: concerning the admissibility of those global solutions, we know that all L_1/L_2 partial solutions are always admissible, in both representations of mass vectors. As for the L_∞ case, in the full mass space not even global solutions are guaranteed to have all admissible vertices (Equation (14)): indeed, $\Delta = \sum_{B \notin \mathcal{C}} m_b(B) - n \cdot \max_{B \notin \mathcal{C}} m_b(B) \leq 0$ as we are under condition (15), therefore $\vec{m}_{L_\infty}^{\bar{A}}[m_b](\bar{A})$ can be negative.

In $\mathcal{M} \setminus \bar{A}$, by (17) the set of L_∞ approximations is entirely admissible iff: $\min_{A \in \mathcal{C}, A \neq \bar{A}} m_b(A) \geq \max_{B \notin \mathcal{C}} m_b(B)$. A counterexample shows that minimizing $\max_{B \notin \mathcal{C}} m_b(B)$ (i.e., considering global L_∞ solutions) does not necessarily imply the latter condition: think of a belief function b with no focal elements of cardinality 1, but several focal elements of cardinality 2. The computation of the admissible part of this set of solutions is not trivial, and is left to future work.

2) *Computational complexity of global solutions*: in terms of computability, finding the global L_1/L_2 approximations involves therefore finding the maximal mass/square mass chain(s). This

is expensive, at least if naively implemented, as we have to examine all $n!$ of them. The most favorable case (in terms of complexity) is the L_∞ one, as all the chains not containing the maximal mass element(s) are optimal. Looking for the maximal mass focal elements requires a single pass of the list of focal elements, with complexity $O(2^n)$ rather than $O(n!)$. On the other hand, in this case the global consonant approximations are spread over a potentially large number of simplicial components of \mathcal{CO} , and are therefore less informative.

3) *Comparison with isopignistic, contour-based approximations:* this behavior compares rather unfavorably with that of two other natural consonant approximations.

Definition 1: Given a belief function $b : 2^\Theta \rightarrow [0, 1]$, its *isopignistic* consonant approximation [12] is defined as the unique consonant b.f. $co_{iso}[b]$ such that $BetP[co_{iso}[b]] = BetP[b]$, where $BetP[\cdot]$ is the pignistic transform mapping each belief function b to the pignistic probability function: $BetP[b](x) = \sum_{A \supseteq x} m_b(A)$. Its contour function is:

$$pl_{co_{iso}[b]}(x) = \sum_{x' \in \Theta} \min \left\{ BetP[b](x), BetP[b](x') \right\}. \quad (20)$$

It is well known that, given the contour function pl_b of a consistent belief function $b : 2^\Theta \rightarrow [0, 1]$ (such that $\max_x pl_b(x) = 1$) we can obtain the unique consonant b.f. which as pl_b as contour function via the following formulae:

$$m_{co}(A_i) = \begin{cases} pl_b(x_i) - pl_b(x_{i+1}) & i = 1, \dots, n-1, \\ pl_b(x_n) & i = n, \end{cases} \quad (21)$$

where x_1, \dots, x_n are the singletons of Θ sorted by plausibility value, and $A_i = \{x_1, \dots, x_i\}$ for all i . Such a unique transformation is not in general feasible for arbitrary belief functions.

The isopignistic transform builds a contour function (possibility distribution) from the pignistic values of the singletons, in the following way. Given the list of singletons x_1, \dots, x_n ordered by pignistic value, (20) reads as: $pl_{co_{iso}[b]}(x_i) = 1 - \sum_{j=1}^{i-1} (BetP[b](x_j) - BetP[b](x_i)) = \sum_{j=i}^n BetP[b](x_j) + (i-1)BetP[b](x_i)$. By applying (21) we obtain the following mass values:

$$m_{co_{iso}[b]}(A_i) = i \cdot (BetP[b](x_i) - BetP[b](x_{i+1})), \quad i = 1, \dots, n. \quad (22)$$

Definition 2: Given a belief function $b : 2^\Theta \rightarrow [0, 1]$, its *contour-based* consonant approximation with maximal chain of focal elements $\mathcal{C} = \{A_1 \subset \dots \subset A_n, |A_i| = i\}$ has mass assignment:

$$m_{co_{con}[b]}(A_i) = \begin{cases} 1 - pl_b(x_2) & i = 1, \\ pl_b(x_i) - pl_b(x_{i+1}) & i = 2, \dots, n-1, \\ pl_b(x_n) & i = n, \end{cases} \quad (23)$$

where $x_i \doteq A_i \setminus A_{i-1}$ for all $i = 1, \dots, n$. Such approximation uses the (unnormalized) contour function of an arbitrary b.f. b as if it was a possibility distribution, by replacing the plausibility of the maximal element with 1, and applying the mapping (21).

In order to guarantee their admissibility, both the isopignistic and the contour-based approximations require sorting (respectively) the pignistic and the plausibility values of the singletons (an operation whose complexity is $O(n \log n)$). On top of that, though, one must add the complexity of actually computing the value of $BetP[b](x)$ ($pl_b(x)$) from a mass vector, which requires n scans (one for each singleton x) with an overall complexity of $n \cdot 2^n$.

D. Relation with outer consonant approximations

Proposition 1: [7] Given a b.f. $b : 2^\Theta \rightarrow [0, 1]$ with b.p.a. m_b , the set of partial outer consonant approximation of b with maximal chain of focal elements $\mathcal{C} = \{A_1 \subset \dots \subset A_n, |A_i| = i\}$ is the convex closure $\mathcal{OC}^{\mathcal{C}}[b] = Cl(\text{co}_{\vec{B}}^{\mathcal{C}}[b], \forall \vec{B})$ of the consonant b.f.s with basic probabilities:

$$m_{\text{co}_{\vec{B}}^{\mathcal{C}}[b]}(A_i) = \sum_{A \subseteq \Theta: \vec{B}(A)=A_i} m_b(A) \quad \forall i = 1, \dots, n, \quad (24)$$

each associated with an “assignment function” $\vec{B} : 2^\Theta \rightarrow \mathcal{C}$, $A \mapsto \vec{B}(A) \supseteq A$ mapping each focal element A to one of the elements of the chain containing it. Note that the points (24) are not all guaranteed to be proper vertices of the polytope $\mathcal{OC}^{\mathcal{C}}[b]$, as some of them can be obtained via convex combinations of others.

The outer approximation produced by the permutation $\rho = \{x_{\rho(1)}, \dots, x_{\rho(n)}\}$ of singletons of Θ which generates the desired maximal chain of focal elements via $A_i = \{x_{\rho(1)}, \dots, x_{\rho(i)}\}$, i.e.,

$$m_{\text{co}_{\vec{B}}^{\mathcal{C}}[b]}(A_i) = \sum_{B \subseteq A_i, B \not\subseteq A_{i-1}} m_b(B) = b(A_i) - b(A_{i-1}), \quad (25)$$

is an actual vertex of $\mathcal{OC}^{\mathcal{C}}[b]$, and the *maximal* outer consonant approximation of b with maximal chain \mathcal{C} . Indeed, an interesting relationship between outer consonant and L_1 consonant approximation in the mass space can be proven.

Theorem 5: Given a belief function $b : 2^\Theta \rightarrow [0, 1]$, the set of partial L_1 consonant approximations $\mathcal{CO}_{\mathcal{M}, L_1}^{\mathcal{C}}[m_b]$ with maximal chain of focal elements \mathcal{C} in the complete mass space and the set $\mathcal{OC}^{\mathcal{C}}[b]$ of its partial outer consonant approximations with the same chain have non-empty intersection. This intersection contains at least the convex closure of the candidate vertices of $\mathcal{OC}^{\mathcal{C}}[b]$ whose assignment functions are such that $\vec{B}(A_i) = A_i$ for all $i = 1, \dots, n$.

Proof. Clearly if $\vec{B}(A_i) = A_i$ for all $i = 1, \dots, n$, then the mass $m_b(A_i)$ is re-assigned to A_i itself for each element A_i of the chain. Hence $m_{co}(A_i) \geq m_b(A_i)$, and the co.b.f. belongs to $\mathcal{CO}_{\mathcal{M}, L_1}^{\mathcal{C}}[m_b]$ (see Equation (18)). \square

In particular, both $co_{max}^{\mathcal{C}}[b]$ (25) and $co_{\mathcal{M} \setminus \Theta, L_1/2}^{\mathcal{C}}[m_b]$:

$$\begin{cases} m_{co}(A) = m_b(A), & A \in \mathcal{C}, A \neq \Theta, \\ m_{co}(\Theta) = m_b(\Theta) + \sum_{B \notin \mathcal{C}} m_b(B) & A = \Theta, \end{cases} \quad (26)$$

belong to both (partial) outer and L_1, \mathcal{M} consonant approximations. (26) is generated by the trivial assignment function assigning all the mass $m_b(B)$, $B \subseteq \Theta$, $B \notin \mathcal{C}$ to $A_n = \Theta$: $\vec{B}(B) = \Theta$ for all $B \notin \mathcal{C}$. A negative result can, on the other hand, be proven for L_∞ approximations.

Theorem 6: Given a belief function $b : 2^\Theta \rightarrow [0, 1]$, the set of its (partial) outer consonant approximations $\mathcal{OC}^{\mathcal{C}}[b]$ with maximal chain \mathcal{C} and the set of its partial L_∞ approximations (in the complete mass space) with the same chain can have empty intersection.

In particular, $co_{max}^{\mathcal{C}}[b]$ is not necessarily an L_∞, \mathcal{M} approximation of b .

E. Ternary example

To conclude this part, it can be useful to compare the different approximations in the toy case of a ternary frame, $\Theta = \{x, y, z\}$. Let the desired consonant approximation(s) have maximal chain $\mathcal{C} = \{\{x\} \subset \{x, y\} \subset \Theta\}$. Figure 3 illustrates the different partial L_p consonant approximations in \mathcal{M} in the simplex of consonant belief functions with chain \mathcal{C} , for a b.f. b with masses:

$$m_b(x) = 0.2, \quad m_b(y) = 0.3, \quad m_b(x, z) = 0.5. \quad (27)$$

Notice that only the L_p approximations in the section with $\bar{A} = \Theta$ are shown for sake of simplicity. The example confirms the general picture of their relationships given in Figure 2.

According to the formulae at page 8 of [30], the set of partial outer consonant approximations of (27) with chain $\{\{x\} \subset \{x, y\} \subset \Theta\}$ is the convex closure of the candidate vertices:

$$\begin{aligned} \vec{m}_{B_1/B_2} &= [m_b(x), m_b(y), 1 - m_b(x) - m_b(y)]', & \vec{m}_{B_7/B_8} &= [0, m_b(x), 1 - m_b(x)]', \\ \vec{m}_{B_3/B_4} &= [m_b(x), 0, 1 - m_b(x)]', & \vec{m}_{B_9/B_{10}} &= [0, m_b(y), 1 - m_b(y)]', \\ \vec{m}_{B_5/B_6} &= [0, m_b(x) + m_b(y), 1 - m_b(x) - m_b(y)]', & \vec{m}_{B_{11}/B_{12}} &= [0, 0, 1]', \end{aligned} \quad (28)$$

plotted in Figure 3 as empty squares. We can observe that, as proven by Theorem 5, both $co_{max}^{\mathcal{C}}[b]$ (25) and $co_{\mathcal{M} \setminus \Theta, L_1/2}^{\mathcal{C}}[m_b]$ (26) belong to the intersection of (partial) outer and L_1, \mathcal{M}

consonant approximations. Note also that the L_2, \mathcal{M} partial approximation is not a (partial) outer consonant approximation. The example also suggests that the latter are included in the L_∞ consonant approximations calculated by neglecting the component $\bar{A} = \Theta$. However, this is not so as attested by the binary case $\Theta = \{x, y\}$, for which the $L_\infty, \mathcal{M} \setminus \Theta$ solutions satisfy, for the maximal chain $\mathcal{C} = \{\{x\} \subset \Theta\}$: $m_b(x) - m_b(y) \leq m_{co}(x) \leq m_b(x) + m_b(y)$, while the outer approximations are such that $0 \leq m_{co}(x) \leq m_b(x)$.

As for isopignistic and contour-based approximations, they are in this case

$$\vec{m}_{iso} = [0.15, 0.1, 0.75]', \quad \vec{m}_{con} = [1 - pl_b(y), pl_b(y) - pl_b(z), pl_b(z)]' = [0.7, -0.2, 0.5]'$$

The pignistic values of the elements in this example are $BetP[b](x) = 0.45$, $BetP[b](y) = 0.3$, $BetP[b](z) = 0.25$ so that the chain associated with the isopignistic approximation is indeed $\{\{x\}, \{x, y\}, \Theta\}$. Notice though that “pseudo” isopignistic approximations can be computed for all chains via Equation (22), none of which will be admissible. The contour-based approximation is not admissible in this case, as singletons have a different plausibility ordering.

While no relationship whatsoever seems to link isopignistic and L_p consonant approximations (as expected), the former appears to be an outer approximation as well. As for the contour-based approximation, it coincides in this example with a vertex of the set of L_∞, \mathcal{M} approximations. However, this is not generally true: just compare Equations (14) and (23).

IV. CONSONANT APPROXIMATION IN THE BELIEF SPACE

We have seen that consonant approximations in the mass space have quite natural semantics in terms of mass redistributions. As we see in this Section, (partial) L_p approximations in the belief space are instead closely associated with lists of belief values determined by the desired maximal chain, and through them to the maximal outer approximation.

To compute them we first need to derive the analytical form of the difference vector $\vec{b} - \vec{co}$ between the original b.f. b and the desired approximation co .

Lemma 1: Given a belief function $b : 2^\Theta \rightarrow [0, 1]$ and an arbitrary consonant b.f. co defined on the same frame with maximal chain of focal elements $\mathcal{C} = \{A_1 \subset \dots \subset A_n, |A_i| = i\}$, the difference between the corresponding vectors in the belief space is:

$$\vec{b} - \vec{co} = \sum_{A \not\supseteq A_1} b(A) \vec{v}_A + \sum_{i=1}^{n-1} \sum_{A \supseteq A_i, A \not\supseteq A_{i+1}} \vec{v}_A \left[\gamma(A_i) + b(A) - \sum_{j=1}^i m_b(A_j) \right], \quad (29)$$

where $\gamma(A) = \sum_{B \subseteq A, B \in \mathcal{C}} (m_b(B) - m_{co}(B))$.

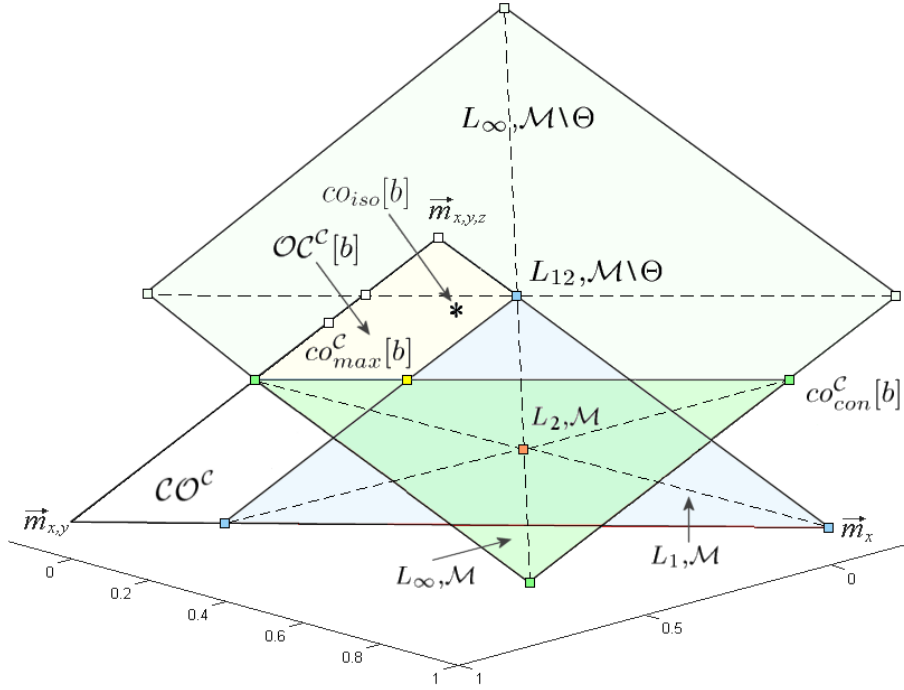


Fig. 3. The simplex \mathcal{CO}^C in the mass space of consonant belief functions with maximal chain $\mathcal{C} = \{\{x\} \subset \{x, y\} \subset \Theta\}$ defined on $\Theta = \{x, y, z\}$, and the L_p partial consonant approximations in \mathcal{M} of the belief function with basic probabilities (27). The L_2, \mathcal{M} approximation is plotted as a red square, as the barycenter of both the sets of L_1, \mathcal{M} (blue triangle) and L_∞, \mathcal{M} (green triangle) approximations. The maximal outer approximation is denoted by a yellow square, the contour-based approximation is a vertex of the triangle L_∞, \mathcal{M} . The various L_p approximations are also depicted for the section $\mathcal{M} \setminus \Theta$ of the mass space: the unique L_1/L_2 approximation is a vertex of L_1, \mathcal{M} , while the polytope of L_∞ approximations in the section is depicted in light green. The related set $\mathcal{OC}^C[b]$ of partial outer consonant approximations (28) is also shown for comparison (light yellow), while the isopignistic function is represented by a star.

A. L_1 approximation

A compact expression for the set of partial L_1 consonant approximations in \mathcal{B} can be found in terms of the innermost values of a list of belief values very much related to the maximal outer consonant approximation (25), as we will see in Section IV-D.

Theorem 7: Given a belief function $b : 2^\Theta \rightarrow [0, 1]$, and a maximal chain of focal elements $\mathcal{C} = \{A_1 \subset \dots \subset A_n, |A_i| = i\}$ in Θ , the partial L_1 consonant approximations $\mathcal{CO}_{B, L_1}^C[b]$ in the belief space with maximal chain \mathcal{C} have mass vectors forming the convex closure:

$$Cl\left(\left[b^1, b^2 - b^1, \dots, b^i - b^{i-1}, \dots, 1 - b^{n-1}\right]', b^i \in \{\gamma_{int1}^i, \gamma_{int2}^i\} \forall i = 1, \dots, n-1\right), \quad (30)$$

where $\gamma_{int1}^i, \gamma_{int2}^i$ are the innermost (median) elements of the list of belief values:

$$\mathcal{L}_i = \left\{b(A), A \supseteq A_i, A \not\supseteq A_{i+1}\right\}. \quad (31)$$

In particular, $b^{n-1} = \gamma_{int1}^{n-1} = \gamma_{int2}^{n-1} = b(A_{n-1})$. As a result, (30) is a polytope of 2^{n-2} vertices.

Note that, even though the approximation is computed in \mathcal{B} , we present the result in terms of mass assignments as they are simpler and easier to interpret. The same holds for the other L_p approximations in \mathcal{B} . Due to the nature of partially ordered set of 2^Θ , the innermost values of the above lists (31) cannot be analytically identified in full generality (even though they can be easily computed numerically). Nevertheless, the partial L_1 approximations in \mathcal{B} can be derived in some cases (see Section IV-E).

By (30), the barycenter of the set of partial L_1 consonant approximations in \mathcal{B} has mass vector:

$$m_{co_{\mathcal{B},L_1}[b]} = \left[\frac{\gamma_{int1}^1 + \gamma_{int2}^1}{2}, \frac{\gamma_{int1}^2 + \gamma_{int2}^2}{2} - \frac{\gamma_{int1}^1 + \gamma_{int2}^1}{2}, \dots, 1 - b(A_{n-1}) \right]'. \quad (32)$$

The *global* L_1 approximation(s) can be easily derived from the expression of the norm of the difference vector (see proof of Theorem 7, Equation (52)).

Theorem 8: Given a belief function $b : 2^\Theta \rightarrow [0, 1]$, its global L_1 consonant approximations $\mathcal{CO}_{\mathcal{B},L_1}[b]$ in \mathcal{B} live in the collection of partial such approximations associated with maximal chain(s) which maximize the cumulative lower halves of the lists of belief values \mathcal{L}_i (31):

$$\arg \max_{\mathcal{C}} \sum_i \sum_{b(A) \in \mathcal{L}_i, b(A) \leq \gamma_{int1}^i} b(A). \quad (33)$$

B. (Partial) L_2 approximation

To find the partial consonant approximation(s) at minimal L_2 distance from b in \mathcal{B} we need to impose the orthogonality of the difference vector $\vec{b} - \vec{c\partial}$ with respect to any given simplicial component $\mathcal{CO}_{\mathcal{B}}^{\mathcal{C}}$ of the complex $\mathcal{CO}_{\mathcal{B}}$:

$$\langle \vec{b} - \vec{c\partial}, \vec{b}_{A_j} - \vec{b}_{\Theta} \rangle = \langle \vec{b} - \vec{c\partial}, \vec{b}_{A_j} \rangle = 0 \quad \forall A_j \in \mathcal{C}, j = 1, \dots, n-1 \quad (34)$$

as $\vec{b}_{\Theta} = \vec{0}$ is the origin of the Cartesian space in \mathcal{B} , and $\vec{b}_{A_j} - \vec{b}_{\Theta}$ for $j = 1, \dots, n-1$ are the generators of the component $\mathcal{CO}_{\mathcal{B}}^{\mathcal{C}}$. Using once again expression (29), the orthogonality conditions (34) translate into the following linear system of equations:

$$\left\{ \sum_{A \notin \mathcal{C}} m_b(A) \langle \vec{b}_A, \vec{b}_{A_j} \rangle + \sum_{A \in \mathcal{C}, A \neq \Theta} (m_b(A) - m_{co}(A)) \langle \vec{b}_A, \vec{b}_{A_j} \rangle = 0. \quad j = 1, \dots, n-1. \quad (35) \right.$$

This is a linear system in $n-1$ unknowns $m_{co}(A_i)$, $i = 1, \dots, n-1$ and $n-1$ equations. Once again, the L_2 partial approximation of b is a function of the list of belief values (31).

Theorem 9: Given a belief function $b : 2^\Theta \rightarrow [0, 1]$, its partial⁴ L_2 consonant approximation $co_{\mathcal{B}, L_2}^{\mathcal{C}}[b]$ in \mathcal{B} with maximal chain $\mathcal{C} = \{A_1 \subset \dots \subset A_n, |A_i| = i\}$ is unique, and has b.p.a.:

$$m_{co_{\mathcal{B}, L_2}^{\mathcal{C}}[b]}(A_i) = ave(\mathcal{L}_i) - ave(\mathcal{L}_{i-1}) \quad \forall i = 1, \dots, n, \quad (36)$$

where $ave(\mathcal{L}_i)$ is the average of the list of belief values \mathcal{L}_i (31), $\mathcal{L}_0 \doteq \{0\}$, and:

$$ave(\mathcal{L}_i) = \frac{1}{2^{|A_{i+1}^c|}} \sum_{A \supseteq A_i, A \not\supseteq A_{i+1}} b(A). \quad (37)$$

C. L_∞ approximation

Partial L_∞ approximations in \mathcal{B} also form a polytope, with 2^{n-1} vertices.

Theorem 10: Given a belief function $b : 2^\Theta \rightarrow [0, 1]$, its partial L_∞ consonant approximations in the belief space $\mathcal{CO}_{\mathcal{B}, L_\infty}^{\mathcal{C}}[b]$ with maximal chain of focal elements $\mathcal{C} = \{A_1 \subset \dots \subset A_n, |A_i| = i\}$ have mass vectors which live in the following convex closure of 2^{n-1} vertices:

$$Cl \left(\left[b^1, b^2 - b^1, \dots, b^i - b^{i-1}, \dots, 1 - b^{n-1} \right]' \mid \forall i = 1, \dots, n-1 \right. \\ \left. b^i \in \left\{ -b(A_1^c) + \frac{b(A_i) + b(\{x_{i+1}\}^c)}{2}, b(A_1^c) + \frac{b(A_i) + b(\{x_{i+1}\}^c)}{2} \right\} \right). \quad (38)$$

The barycenter $co_{\mathcal{B}, L_\infty}^{\mathcal{C}}[b]$ of this set has mass assignment:

$$m_{co_{\mathcal{B}, L_\infty}^{\mathcal{C}}[b]}(A_i) = \begin{cases} \frac{b(A_1) + b(\{x_2\}^c)}{2} & i = 1, \\ \frac{b(A_i) - \frac{2}{b(A_{i-1})} + \frac{pl_b(\{x_i\}) - pl_b(\{x_{i+1}\})}{2}}{2} & i = 2, \dots, n-1, \\ 1 - b(A_{n-1}) & i = n. \end{cases} \quad (39)$$

Note that, since $b(A_1^c) = 1 - pl_b(A_1) = 1 - pl_b(x_1)$, the size of the polytope (38) of partial L_∞ approximations of b is a function of the plausibility of the innermost desired focal element only. As expected, it reduces to zero only when the b is consistent and $A_1 = \{x_1\}$ has plausibility 1.

A straightforward interpretation of the barycenter of the partial L_∞ approximations in \mathcal{B} in terms of degrees of belief is possible when we notice that, for all $i = 1, \dots, n$

$$m_{co_{\mathcal{B}, L_\infty}^{\mathcal{C}}[b]}(A_i) = \frac{m_{co_{\mathcal{B}, L_\infty}^{\mathcal{C}}[b]}(A_i) + m_{co_{\mathcal{B}, L_\infty}^{\mathcal{C}}[b]}(A_i)}{2}$$

(recall Equations (25) and (23)), i.e., the barycenter is the average of the maximal outer consonant approximation and what we called ‘‘contour-based’’ consonant approximation.

⁴The computation of the global L_2 approximation(s) is rather involved. We plan to solve this issue in the near future.

To compute the *global* L_∞ approximation of the original belief function b in \mathcal{B} , we need to locate as usual the partial solution whose L_∞ distance from b is the smallest. Given the expression (56) of the L_∞ norm of the difference vector (see the proof of Theorem 10), such partial distance is (for each maximal chain $\mathcal{C} = \{A_1 \subset \dots \subset A_n, |A_i| = i\}$) equal to $b(A_1^c)$. Therefore the global L_∞ consonant approximations of b in the belief space are associated with the chains of focal elements: $\arg \min_{\mathcal{C}} b(A_1^c) = \arg \min_{\mathcal{C}} (1 - pl_b(A_1)) = \arg \max_{\mathcal{C}} pl_b(A_1)$.

Theorem 11: Given a belief function $b : 2^\Theta \rightarrow [0, 1]$, the set of global L_∞ consonant approximations of b in the belief space is the collection of partial L_∞ approximations (38) associated with maximal chains whose smallest focal element is the maximal plausibility singleton:

$$\mathcal{CO}_{\mathcal{B}, L_\infty}[b] = \bigcup_{\mathcal{C}: A_1 = \arg \max_x pl_b(x)} \mathcal{CO}_{\mathcal{B}, L_\infty}^{\mathcal{C}}[b].$$

D. Approximations in \mathcal{B} as generalized maximal outer approximations

From Theorems 7, 9 and 10, a comprehensive view of the results of this Section can be given in terms of the lists of belief values (31): $\mathcal{L}_i = \{b(A), A \supseteq A_i, A \not\supseteq A_{i+1}\} \forall i = 1, \dots, n$, n included, as $\mathcal{L}_n = \{b(\Theta)\} = \{1\}$. Indeed, the b.p.a.s of *all the* L_p partial approximations in the belief space are differences of simple functions of belief values taken from these lists (which are uniquely determined by the desired chain for focal elements $A_1 \subset \dots \subset A_n$), as:

$$\begin{aligned} m_{co_{max}^{\mathcal{C}}}[b](A_i) &= \min(\mathcal{L}_i) - \min(\mathcal{L}_{i-1}); & m_{co_{con}^{\mathcal{C}}}[b](A_i) &= \max(\mathcal{L}_i) - \max(\mathcal{L}_{i-1}); \\ m_{co_{L_1}^{\mathcal{C}}}[b](A_i) &= \frac{int_1(\mathcal{L}_i) + int_2(\mathcal{L}_i)}{2} - \frac{int_1(\mathcal{L}_{i-1}) + int_2(\mathcal{L}_{i-1})}{2}; & m_{co_{L_2}^{\mathcal{C}}}[b](A_i) &= ave(\mathcal{L}_i) - ave(\mathcal{L}_{i-1}); \\ m_{co_{L_\infty}^{\mathcal{C}}}[b](A_i) &= \frac{\max(\mathcal{L}_i) + \min(\mathcal{L}_i)}{2} - \frac{\max(\mathcal{L}_{i-1}) + \min(\mathcal{L}_{i-1})}{2}, \end{aligned} \quad (40)$$

where the expression for $co_{\mathcal{B}, L_\infty}^{\mathcal{C}}[b]$ comes directly from (39). For each vertex of the L_1 polytope, either $int_1(\mathcal{L}_i)$ or $int_2(\mathcal{L}_i)$ is picked from the list \mathcal{L}_i for each element A_i of the chain: $m_{co}(A_i) = int_1(\mathcal{L}_i)/int_2(\mathcal{L}_i) - int_1(\mathcal{L}_{i-1})/int_2(\mathcal{L}_{i-1})$. For each vertex of the L_∞ polytope, either $\max(\mathcal{L}_i)$ or $\min(\mathcal{L}_i)$ is selected, yielding: $m_{co}(A_i) = \max(\mathcal{L}_i)/\min(\mathcal{L}_i) - \max(\mathcal{L}_{i-1})/\min(\mathcal{L}_{i-1})$.

The different approximations in \mathcal{B} (40) correspond therefore to different choices of a representative for the lists \mathcal{L}_i . The maximal outer approximation $co_{max}^{\mathcal{C}}[b]$ is obtained by picking as representative $\min(\mathcal{L}_i)$, $co_{con}^{\mathcal{C}}[b]$ amounts to picking $\max(\mathcal{L}_i)$, the barycenter of the L_1 approximations to choosing the average innermost (median) value, the barycenter of the L_∞ approximations to the average outermost value, the L_2 solution to picking the overall average value of the list.

Each vertex of the L_1 solution set amounts to selecting, for each component, either one of the innermost values; each vertex of the L_∞ polytope, either one of the outermost values.

1) *Interpretation of the list \mathcal{L}_i* : belief functions are defined on a partially ordered set, the power set $2^\Theta = \{A \subseteq \Theta\}$, of which a maximal chain is a maximal totally ordered subset. Therefore, given two elements of the chain $A_i \subset A_{i+1}$, there are a number of “intermediate” focal elements A which contain the latter but not the former. If 2^Θ was to be a totally ordered set, the list \mathcal{L}_i would contain a single element $b(A_i)$ and all the L_p approximations (40) would reduce to the maximal outer consonant approximation $co_{max}^C[b]$, with b.p.a. $m_{co_{max}^C[b]}(A_i) = b(A_i) - b(A_{i-1})$. The diversity of L_p approximations in \mathcal{B} is therefore a consequence of belief functions being defined on partially ordered sets: together with the contour-based approximation (23), they can all be seen as *different generalizations of the maximal outer consonant approximation*.

2) *Relations between approximations in \mathcal{B}* : the list \mathcal{L}_i is composed by $2^{|A_{i+1}^c|} = 2^{n-(i+1)}$ elements, for all $i = 1, \dots, n$. Obviously $|\mathcal{L}_0| = 1$ by definition. We can therefore infer the following relationships between the different L_p approximations in \mathcal{B} :

- the barycenter of the set of L_∞ approximations is the average of the maximal outer and the contour based approximations, always;
- $ave(\mathcal{L}_i) = \frac{\max(\mathcal{L}_i) + \min(\mathcal{L}_i)}{2} = \frac{int_1(\mathcal{L}_i) + int_2(\mathcal{L}_i)}{2}$ whenever $|\mathcal{L}_i| \leq 2$. i.e. for $i \geq n - 2$ or $i = 0$; therefore the last two components of the L_1 barycenter, L_2 , and L_∞ barycenter approximations coincide: $m_{co_{\mathcal{B}, L_1}^C[b]}(A_i) = m_{co_{\mathcal{B}, L_2}^C[b]}(A_i) = m_{co_{\mathcal{B}, L_\infty}^C[b]}(A_i)$ for $i = n - 1, n$;
- in particular, these three pointwise approximations coincide $co_{\mathcal{B}, L_1}^C[b] = co_{\mathcal{B}, L_2}^C[b] = co_{\mathcal{B}, L_\infty}^C[b]$ whenever $|\Theta| = n \leq 3$;
- all the point-wise approximations in (40) coincide on the last component: $m_{co_{max}^C[b]}(A_n) = m_{co_{con}^C[b]}(A_n) = m_{co_{\mathcal{B}, L_1}^C[b]}(A_n) = m_{co_{\mathcal{B}, L_2}^C[b]}(A_n) = m_{co_{\mathcal{B}, L_\infty}^C[b]}(A_n) = 1 - b(A_{n-1})$.

3) *Admissibility*: as it is clear from the table of Equation (40), the b.p.a.s of all the L_p approximations in the belief space are differences of vectors of all positive values; indeed, differences of shifted version of the same positive vector. As such vectors $\left[\frac{int_1(\mathcal{L}_i) + int_2(\mathcal{L}_i)}{2}, i = 1, \dots, n \right]'$, $\left[\frac{\max(\mathcal{L}_i) + \min(\mathcal{L}_i)}{2}, i = 1, \dots, n \right]'$, $[ave(\mathcal{L}_i), i = 1, \dots, n]'$ are not guaranteed to be monotonically increasing for any arbitrary maximal chain \mathcal{C} , none of the related partial approximations are guaranteed to be entirely admissible. However, sufficient conditions under which they are admissible can be worked out by studying the structure of the list of belief values (31). Let us first

consider co_{max}^C and co_{con}^C . As $\min(\mathcal{L}_{i-1}) = b(A_{i-1}) \leq b(A_i) = \min(\mathcal{L}_i)$, the maximal partial outer approximation is admissible for all maximal chains \mathcal{C} . As for the contour-based approximation, $\max(\mathcal{L}_i) = b(A_i \cup A_{i+1}^c) = b(x_{i+1}^c) = 1 - pl_b(x_{i+1})$ while $\max(\mathcal{L}_{i-1}) = 1 - pl_b(x_i)$, so that $\max(\mathcal{L}_i) - \max(\mathcal{L}_{i-1}) = pl_b(x_i) - pl_b(x_{i+1})$ which is guaranteed non-negative *if the chain \mathcal{C} is generated by singletons sorted by their plausibility values*. As a consequence, as

$$m_{co_{\mathcal{B}, L_\infty}^C [b]}(A_i) = \frac{\max(\mathcal{L}_i) - \max(\mathcal{L}_{i-1})}{2} + \frac{\min(\mathcal{L}_i) - \min(\mathcal{L}_{i-1})}{2},$$

the barycenter of the set of L_∞, \mathcal{B} approximations is also admissible on the same chain(s). A similar but more sophisticated sufficient condition holds in the L_1 and L_2 cases.

Theorem 12: Consider a belief function $b : 2^\Theta \rightarrow [0, 1]$, with b.p.a. m_b . If a maximal chain $\mathcal{C} = \{A_1 \subset \dots \subset A_n, |A_i| = i\}$ is such that the elements $x_i = A_i \setminus A_{i-1}$ are sorted w.r.t. the values $pl_b^{A_{i+2}}(x_i) \doteq \sum_{B \subseteq A_{i+2}, B \ni x_i} m_b(B)$ (where $pl_b^{A_{i+2}}(x_i)$ measures the plausibility of x_i given A_{i+2}), then both the partial L_2 consonant approximation and the barycenter of the L_1 consonant approximations of b in the belief space with maximal chain \mathcal{C} are admissible.

E. Graphical comparison in a ternary example

As we did in the mass space analysis, it can be helpful to visualize the outcomes of L_p consonant approximation in the belief space when $\Theta = \{x, y, z\}$, and compare them with approximations in the mass space on the same example of Section III-E (Figure 4). To obtain a homogeneous comparison, we plot both sets of approximations (in the belief and in the mass space) as vectors of mass values. When $\Theta = \{x, y, z\}$ and $A_1 = \{x\}$, $A_2 = \{x, y\}$, $A_3 = \{x, y, z\}$ the relevant lists of belief values are $\mathcal{L}_1 = \{b(x), b(x, z)\}$ and $\mathcal{L}_2 = \{b(x, y)\}$, so that $\min(\mathcal{L}_1) = \text{int}_1(\mathcal{L}_1) = b(x)$, $\max(\mathcal{L}_1) = \text{int}_2(\mathcal{L}_1) = b(x, z)$, $\text{ave}(\mathcal{L}_1) = \frac{b(x) + b(x, z)}{2}$; $\min(\mathcal{L}_2) = \text{int}_1(\mathcal{L}_2) = \max(\mathcal{L}_2) = \text{int}_2(\mathcal{L}_2) = \text{ave}(\mathcal{L}_2) = b(x, y)$. Therefore, the set of L_1 partial consonant approximations is, by Equation (30), a segment $Cl(\vec{m}_{L_1}^1, \vec{m}_{L_1}^2)$, with vertices:

$$\vec{m}_{L_1}^1 = [b(x), b(x, y) - b(x), 1 - b(x, y)]', \quad \vec{m}_{L_1}^2 = [b(x, z), b(x, y) - b(x, z), 1 - b(x, y)]' \quad (41)$$

(see Figure 4). Note that this set is not entirely admissible, not even in the ternary case. We also know that the maximal partial outer approximation (25) is not in general a vertex of the polygon of L_1 partial approximations in \mathcal{B} , unlike what the ternary example (for which $\text{int}_1(\mathcal{L}_1) = b(x)$)

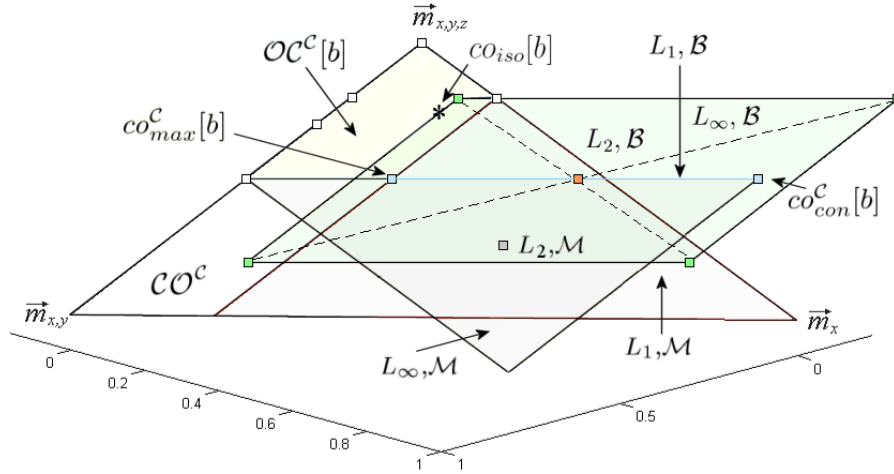


Fig. 4. Comparison between L_p partial consonant approximations in the mass \mathcal{M} and belief \mathcal{B} spaces for the belief function with basic probabilities (27) on $\Theta = \{x, y, z\}$. The L_2, \mathcal{B} approximation is plotted as a red square, as the barycenter of both the sets of L_1, \mathcal{B} (blue segment) and L_∞, \mathcal{B} (green quadrangle) approximations. Contour-based and maximal outer approximations are in this example the extreme of the segment L_1, \mathcal{B} (blue squares). The polytope of partial outer consonant approximations (yellow), the isopignistic approximation (star) and the various L_p partial approximations in \mathcal{M} (in gray levels) are also drawn.

suggests. The partial L_2 approximation in \mathcal{B} is, by Equation (40), unique, with mass vector:

$$\vec{m}_{co\mathcal{B},L_2}[b] = \vec{m}_{co\mathcal{B},L_\infty}[b] = \left[\frac{b(x) + b(x, z)}{2}, b(x, y) - \frac{b(x) + b(x, z)}{2}, 1 - b(x, y) \right]', \quad (42)$$

and coincides with the barycenter of the set of partial L_∞ approximations (note that this is not so in the general case). As for the full set of partial L_∞ approximations, this has vertices (38):

$$\begin{aligned} \vec{m}_{L_\infty}^1 &= \left[\frac{b(x)+b(x,z)}{2} - b(y, z), b(x, y) - \frac{b(x)+b(x,z)}{2}, 1 - b(x, y) + b(y, z) \right]'; \\ \vec{m}_{L_\infty}^2 &= \left[\frac{b(x)+b(x,z)}{2} - b(y, z), b(x, y) - \frac{b(x)+b(x,z)}{2} + 2b(y, z), 1 - b(x, y) - b(y, z) \right]'; \\ \vec{m}_{L_\infty}^3 &= \left[\frac{b(x)+b(x,z)}{2} + b(y, z), b(x, y) - \frac{b(x)+b(x,z)}{2} - 2b(y, z), 1 - b(x, y) + b(y, z) \right]'; \\ \vec{m}_{L_\infty}^4 &= \left[\frac{b(x)+b(x,z)}{2} + b(y, z), b(x, y) - \frac{b(x)+b(x,z)}{2}, 1 - b(x, y) - b(y, z) \right]'; \end{aligned}$$

which as expected are not all admissible (see Figure 4 again). There do not appear to exist significant links between L_p approximations in \mathcal{M} and \mathcal{B} .

F. Belief versus mass space approximations

We can draw some conclusions by comparing the results of Section III and Section IV:

- L_p consonant approximation in the *mass* space is basically associated with different but related *mass redistribution* processes: the mass outside the desired chain of focal elements is re-assigned in some way to the elements of the chain;

- their relationship with classical outer approximations (on one hand) and approximations based on the pignistic transform (on the other) are rather weak;
- the different L_p approximations in \mathcal{M} are characterized by natural geometric relations;
- consonant approximation in the *belief* space is inherently linked to the lists of belief values of focal elements “intermediate” between each pair of elements of the desired chain;
- the classical outer consonant approximations and contour-based approximations are also approximations of the same type: indeed, the latter and the L_p approximations in the belief space can be seen as different generalizations of the maximal outer approximation, induced by the nature of partially ordered set of the power set;
- in the mass space, some partial approximations are always entirely admissible and should be preferred (this is the case for the L_1 and L_2 approximations in \mathcal{M}), some others are not;
- as for the belief case, even though all partial L_p approximations are differences between shifted versions of the same positive vector, admissibility is not guaranteed for all maximal chains; however, they are admissible for chains generated by singletons sorted by their plausibility (or partial plausibility) values.

In conclusion, approximations in the mass and the belief space turn out to be inherently related to completely different philosophies to the consonant approximation problem: mass redistribution versus generalized maximal outer approximation.

1) *Approximation in the mass space and general imaging in belief revision:* as it is the case for geometric conditioning in the mass space [18], results of consonant approximations in the mass space can also be interpreted as a generalization of Lewis’ *imaging* approach to belief revision, originally formulated in the context of probabilities [31]. The idea behind imaging is that, upon observing that some state $x \in \Theta$ is impossible, you transfer the probability initially assigned to x completely towards the remaining state you deem the most similar to x [32]. Peter Gärdenfors [33] extended Lewis’ idea by allowing a fraction λ_i of the probability of such state x to be re-distributed to all remaining states x_i ($\sum_i \lambda_i = 1$).

In the case of partial consonant approximation of belief functions, the mass $m_b(B)$ of each focal element not in the desired maximal chain \mathcal{C} should be re-assigned to the “closest” focal element $A \in \mathcal{C}$ in the chain. If no information on the similarity between focal elements is available or make sense in a particular context, ignorance translates into allowing all possible set of weights $\lambda(A)$, $A \in \mathcal{C}$ for Gärdenfors’ (generalized) belief revision by imaging. This yields the set of

partial L_1 consonant approximations in \mathcal{M} . If such ignorance is expressed by assigning instead equal weight $\lambda(A)$ to each $A \in \mathcal{C}$, the resulting partial consonant approximation is the unique partial L_2 approximation, the barycenter of the polytope of L_1 partial approximations.

2) *Three families of consonant approximations:* as we pointed out above, L_p consonant approximation in the belief space amounts instead to generalizing in different but related ways the classical approach incarnated by the maximal outer approximation (25). The latter, together with the contour-based approximation (23) form therefore a different, coherent family of consonant approximations. As for the isopignistic approximation, it seems to be completely unrelated to approximations in both the mass and the belief space, as it naturally fits in the context of the Transferable Belief Model and the use of the pignistic function. It will be interesting, in this sense, to study the property of geometric consonant approximations with respect to other major probability transforms, such as orthogonal projection, intersection probability, and relative plausibility and belief of singletons (since they seem to be related the plausibilities of the singletons). Isopignistic, mass-space and belief-space consonant approximations form three distinct families of approximations, with fundamentally different rationales: which approach to use will therefore vary according to the chosen framework, and the problem at hand.

V. CONCLUSIONS

In this paper we studied all the consonant approximations of belief functions induced by minimizing L_p distances to the consonant complex, in both the mass space of basic probability vectors and the belief space of belief vectors. While interpretations for such approximations in the mass space are rather natural in terms of mass redistribution, approximations in the belief space are generalizations of the maximal outer and the contour-based approximations. We compared all these L_p approximations with each other and with other classical consonant approximations, and illustrated them with the help of a running example.

APPENDIX

Proof of Theorem 1: \mathbb{R}^{N-1} **representation.** The L_1 norm of the difference vector (8) is:

$$\|\vec{m}_b - \vec{m}_{co}\|_{L_1} = \sum_{A \in \mathcal{C}} |m_b(A) - m_{co}(A)| + \sum_{B \notin \mathcal{C}} m_b(B) = \sum_{A \in \mathcal{C}} |\beta(A)| + \sum_{B \notin \mathcal{C}} m_b(B),$$

expressed as a function of the variables $\{\beta(A) \doteq m_b(A) - m_{co}(A), A \in \mathcal{C}, A \neq \Theta\}$. As

$$\sum_{A \in \mathcal{C}} \beta(A) = \sum_{A \in \mathcal{C}} (m_b(A) - m_{co}(A)) = \sum_{A \in \mathcal{C}} m_b(A) - 1 = - \sum_{B \notin \mathcal{C}} m_b(B),$$

we have that: $\beta(\Theta) = - \sum_{B \notin \mathcal{C}} m_b(B) - \sum_{A \in \mathcal{C}, A \neq \Theta} \beta(A)$. Therefore, the above norm reads as:

$$\|\vec{m}_b - \vec{m}_{co}\|_{L_1} = \left| - \sum_{B \notin \mathcal{C}} m_b(B) - \sum_{A \in \mathcal{C}, A \neq \Theta} \beta(A) \right| + \sum_{A \in \mathcal{C}, A \neq \Theta} |\beta(A)| + \sum_{B \notin \mathcal{C}} m_b(B). \quad (43)$$

The norm (43) is a function of the form $\sum |x_i| + \left| - \sum x_i - k \right|$, $k \geq 0$, which has an entire simplex of minima, namely: $x_i \leq 0 \forall i$, $\sum_i x_i \geq -k$. The minima of the L_1 norm (43) are therefore the solutions to the following system of constraints:

$$\begin{cases} \beta(A) \leq 0 & \forall A \in \mathcal{C}, A \neq \Theta, \\ \sum_{A \in \mathcal{C}, A \neq \Theta} \beta(A) \geq - \sum_{B \notin \mathcal{C}} m_b(B). \end{cases} \quad (44)$$

This reads, in terms of the mass assignment m_{co} of the desired consonant approximation, as:

$$\begin{cases} m_{co}(A) \geq m_b(A) & \forall A \in \mathcal{C}, A \neq \Theta, \\ \sum_{A \in \mathcal{C}, A \neq \Theta} (m_b(A) - m_{co}(A)) \geq - \sum_{B \notin \mathcal{C}} m_b(B). \end{cases} \quad (45)$$

Note that the last constraint reduces to

$$\sum_{A \in \mathcal{C}, A \neq \Theta} (m_b(A) - m_{co}(A)) = \sum_{A \in \mathcal{C}, A \neq \Theta} m_b(A) - 1 + m_{co}(\Theta) \geq \sum_{A \in \mathcal{C}} m_b(A) - 1,$$

i.e., $m_{co}(\Theta) \geq m_b(\Theta)$. Therefore the partial L_1 approximations in \mathcal{M} are those consonant b.f.s co s.t. $m_{co}(A) \geq m_b(A) \forall A \in \mathcal{C}$. The vertices of the set of partial approximations (44) are given by the vectors of variables $\{\vec{\beta}_{\bar{A}}, \bar{A} \in \mathcal{C}\}$ such that: $\vec{\beta}_{\bar{A}}(\bar{A}) = m_b(B)$, for $\vec{\beta}_{\bar{A}}(A) = 0$ for $A \neq \bar{A}$ whenever $\bar{A} \neq \Theta$, while $\vec{\beta}_{\Theta} = \vec{0}$. Immediately, in terms of masses the vertices of the set of partial L_1 approximations have b.p.a. (12) and barycenter (13).

To find the *global* L_1 consonant approximation(s) over the whole consonant complex, we need to locate the component $\mathcal{CO}_{\mathcal{M}}^{\mathcal{C}}$ at minimal L_1 distance from \vec{m}_b . All the partial approximations (45) onto $\mathcal{CO}_{\mathcal{M}}^{\mathcal{C}}$ have L_1 distance from \vec{m}_b equal to $2 \sum_{B \notin \mathcal{C}} m_b(B)$. Therefore, the minimal distance component(s) of the complex are those associated with maximal chains that originally have maximal mass with respect to m_b .

\mathbb{R}^{N-2} **representation.** Consider now the difference vector (9). Its L_1 norm is simply: $\|\vec{m}_b - \vec{m}_{co}\|_{L_1} = \sum_{A \in \mathcal{C}, A \neq \bar{A}} |m_b(A) - m_{co}(A)| + \sum_{B \notin \mathcal{C}} m_b(B)$, which is obviously minimized by $m_b(A) =$

$m_{co}(A) \forall A \in \mathcal{C}, A \neq \bar{A}$, i.e., (12). Such (unique) partial approximation onto $\mathcal{CO}_{\mathcal{M}}^{\mathcal{C}}$ has L_1 distance from \vec{m}_b given by $\sum_{B \notin \mathcal{C}} m_b(B)$. Therefore, the minimal distance component(s) of the consonant complex are once again those associated with maximal chains $\arg \min_{\mathcal{C}} \sum_{B \notin \mathcal{C}} m_b(B) = \arg \max_{\mathcal{C}} \sum_{A \in \mathcal{C}} m_b(A)$.

Proof of Theorem 2: as the generators of $\mathcal{CO}_{\mathcal{M}}^{\mathcal{C}}$ are the vectors in \mathcal{M} : $\{\vec{m}_A - \vec{m}_{\Theta}, A \in \mathcal{C}, A \neq \Theta\}$ we need to write: $\langle \vec{m}_b - \vec{m}_{co}, \vec{m}_A - \vec{m}_{\Theta} \rangle = 0$ for all $A \in \mathcal{C}, A \neq \Theta$.

\mathbb{R}^{N-1} **representation.** In the complete mass space the vector $\vec{m}_A - \vec{m}_{\Theta}$ is such that: $\vec{m}_A - \vec{m}_{\Theta}(B) = 1$ if $B = A$, -1 if $B = \Theta$, 0 if $B \neq A, \Theta$.

Hence, the orthogonality condition becomes $\beta(A) - \beta(\Theta) = 0$ for all $A \in \mathcal{C}, A \neq \Theta$, where again $\beta(A) = m_b(A) - m_{co}(A)$. As $\beta(\Theta) = -\sum_{B \notin \mathcal{C}} m_b(B) - \sum_{A \in \mathcal{C}, A \neq \Theta} \beta(A)$ (see the proof of Theorem 1), the orthogonality condition becomes $2\beta(A) + \sum_{B \notin \mathcal{C}} m_b(B) + \sum_{B \in \mathcal{C}, B \neq A, \Theta} \beta(B) = 0$ for all $A \in \mathcal{C}, A \neq \Theta$. Its solution is clearly $\beta(A) = \frac{-\sum_{B \notin \mathcal{C}} m_b(B)}{n} \forall A \in \mathcal{C}, A \neq \Theta$, as by substitution $-\frac{2}{n} \sum_{B \notin \mathcal{C}} m_b(B) + \sum_{B \notin \mathcal{C}} m_b(B) - \frac{n-2}{n} \sum_{B \notin \mathcal{C}} m_b(B) = 0$, i.e., (13).

To find the global L_2 approximation(s), we need to compute the L_2 distance of \vec{m}_b from the closest such partial solution. We have: $\|\vec{m}_b - \vec{m}_{co}\|_{L_2}^2 = \sum_{A \subseteq \Theta} (m_b(A) - m_{co}(A))^2 =$

$$= \sum_{A \in \mathcal{C}} \left(\frac{\sum_{B \notin \mathcal{C}} m_b(B)}{n} \right)^2 + \sum_{B \notin \mathcal{C}} (m_b(B))^2 = \frac{(\sum_{B \notin \mathcal{C}} m_b(B))^2}{n} + \sum_{B \notin \mathcal{C}} (m_b(B))^2,$$

which is minimized by the component $\mathcal{CO}_{\mathcal{M}}^{\mathcal{C}}$ that minimizes $\sum_{B \notin \mathcal{C}} (m_b(B))^2$.

\mathbb{R}^{N-2} **representation.** In the case of a section of the mass space with missing component $\bar{A} \in \mathcal{C}$, as there $\vec{m}_{\bar{A}} = \vec{0}$, the orthogonality condition reads as: $\langle \vec{m}_b - \vec{m}_{co}, \vec{m}_{\bar{A}} \rangle = \beta(\bar{A}) = 0 \forall A \in \mathcal{C}, A \neq \Theta$, i.e., $\beta(A) = 0 \forall A \in \mathcal{C}, A \neq \bar{A}$ and we get (12) once again. The optimal distance is, in this case: $\|\vec{m}_b - \vec{m}_{co}\|_{L_2}^2 = \sum_{A \subseteq \Theta} (\beta(A))^2 = \sum_{B \notin \mathcal{C}} (m_b(B))^2 + \beta(\bar{A}) =$

$$= \sum_{B \notin \mathcal{C}} (m_b(B))^2 + \left(m_b(\bar{A}) - m_b(\bar{A}) - \sum_{B \notin \mathcal{C}} m_b(B) \right)^2 = \sum_{B \notin \mathcal{C}} (m_b(B))^2 + \left(\sum_{B \notin \mathcal{C}} m_b(B) \right)^2,$$

which is once again minimized by the maximal chain(s) $\arg \min_{\mathcal{C}} \sum_{B \notin \mathcal{C}} (m_b(B))^2$.

Proof of Theorem 3: \mathbb{R}^{N-1} **representation.** In the complete mass space, the L_{∞} norm of the difference vector is: $\|\vec{m}_b - \vec{m}_{co}\|_{L_{\infty}} = \max \left\{ \max_{A \in \mathcal{C}} |\beta(A)|, \max_{B \notin \mathcal{C}} m_b(B) \right\}$.

As $\beta(\Theta) = \sum_{B \in \mathcal{C}} m_b(B) - 1 - \sum_{B \in \mathcal{C}, B \neq \Theta} \beta(B)$, we have that $|\beta(\Theta)| = \left| \sum_{B \notin \mathcal{C}} m_b(B) + \sum_{B \in \mathcal{C}, B \neq \Theta} \beta(B) \right|$ and the norm to minimize becomes:

$$\|\vec{m}_b - \vec{m}_{co}\|_{L_{\infty}} = \max \left\{ \max_{A \in \mathcal{C}, A \neq \Theta} |\beta(A)|, \left| \sum_{B \notin \mathcal{C}} m_b(B) + \sum_{B \in \mathcal{C}, B \neq \Theta} \beta(B) \right|, \max_{B \notin \mathcal{C}} m_b(B) \right\}. \quad (46)$$

This is a function of the form

$$\max \left\{ |x_1|, |x_2|, |x_1 + x_2 + k_1|, k_2 \right\}, \quad 0 \leq k_2 \leq k_1 \leq 1. \quad (47)$$

Such a function has two possible behaviors in terms of its minimal points in the plane x_1, x_2 .

Case 1. If $k_1 \leq 3k_2$ its contour function has the form rendered in Figure 5-left. The set of minimal points is given by $x_i \geq -k_2, x_1 + x_2 \leq k_2 - k_1$. In the general case of an arbitrary number $m-1$ of variables x_1, \dots, x_{m-1} such that $x_i \geq -k_2, \sum_i x_i \leq k_2 - k_1$, the set of minimal points is a simplex with m vertices: each vertex v^i is such that $v^i(j) = -k_2 \forall j \neq i; v^i(i) = -k_1 + (m-1)k_2$ (obviously $v^m = [-k_2, \dots, -k_2]$). For (46), in the first case $\left(\max_{B \notin \mathcal{C}} m_b(B) \geq \frac{1}{n} \sum_{B \notin \mathcal{C}} m_b(B) \right)$ the set of partial L_∞ approximations is given by the following system of inequalities:

$$\begin{cases} \beta(A) \geq -\max_{B \notin \mathcal{C}} m_b(B) & A \in \mathcal{C}, A \neq \Theta, \\ \sum_{B \in \mathcal{C}, B \neq \Theta} \beta(B) \leq \max_{B \notin \mathcal{C}} m_b(B) - \sum_{B \notin \mathcal{C}} m_b(B). \end{cases}$$

This determines a simplex of solutions $Cl(\vec{m}_{L_\infty}^{\bar{A}}[m_b], \bar{A} \in \mathcal{C})$ with vertices:

$$\begin{cases} \beta_{\bar{A}}(A) = -\max_{B \notin \mathcal{C}} m_b(B) & A \in \mathcal{C}, A \neq \bar{A}, \\ \beta_{\bar{A}}(\bar{A}) = -\sum_{B \notin \mathcal{C}} m_b(B) + (n-1) \max_{B \notin \mathcal{C}} m_b(B), \end{cases}$$

or, in terms of their basic probability assignments, (14). Its barycenter is given by:

$$\frac{\sum_{\bar{A} \in \mathcal{C}} \vec{m}_{L_\infty}^{\bar{A}}[m_b](A)}{n} = \frac{n \cdot m_b(A) + \sum_{B \notin \mathcal{C}} m_b(B)}{n} = m_b(A) + \frac{\sum_{B \notin \mathcal{C}} m_b(B)}{n},$$

i.e., the L_2 partial approximation (13). The corresponding minimal L_∞ norm of the difference vector is, according to (46), equal to $\max_{B \notin \mathcal{C}} m_b(B)$.

Case 2. In the second case $k_1 > 3k_2$, i.e., for the norm (46), $\max_{B \notin \mathcal{C}} m_b(B) < \frac{1}{n} \sum_{B \notin \mathcal{C}} m_b(B)$, the contour function of (47) is as in Figure 5-right. There is a single minimal point, located in $[-1/3k_1, -1/3k_1]$. For an arbitrary number $m-1$ of variables the minimal point is $[(-1/m)k_1, \dots, (-1/m)k_1]'$, i.e., for system (46), $\beta(A) = -\frac{1}{n} \sum_{B \notin \mathcal{C}} m_b(B)$ for all $A \in \mathcal{C}, A \neq \Theta$ or, in terms of basic probability assignments, (13) (the mass of Θ is obtained by normalization). The corresponding minimal L_∞ norm of the difference vector is $\frac{1}{n} \sum_{B \notin \mathcal{C}} m_b(B)$.

\mathbb{R}^{N-2} **representation.** In the section of the mass space with missing component $\bar{A} \in \mathcal{C}$, the L_∞ norm of the difference vector (9) is:

$$\|\vec{m}_b - \vec{m}_{co}\|_{L_\infty} = \max_{\emptyset \subsetneq A \subsetneq \Theta} |m_b(A) - m_{co}(A)| = \max \left\{ \max_{A \in \mathcal{C}, A \neq \bar{A}} |\beta(A)|, \max_{B \notin \mathcal{C}} m_b(B) \right\}, \quad (48)$$

which is minimized by: $|\beta(A)| \leq \max_{B \notin \mathcal{C}} m_b(B) \forall A \in \mathcal{C}, A \neq \bar{A}$, i.e., in the mass coordinates m_{co} , (17). By (48) the corresponding minimal L_∞ norm is: $\max_{B \notin \mathcal{C}} m_b(B)$. Clearly, the vertices of the solution set are all the vectors of β variables such that $\beta(A) = +/ - \max_{B \notin \mathcal{C}} m_b(B)$ for all $A \in \mathcal{C}, A \neq \bar{A}$. Its barycenter is clearly given by $\beta(A) = 0$ for all $A \in \mathcal{C}, A \neq \bar{A}$, i.e., (12).

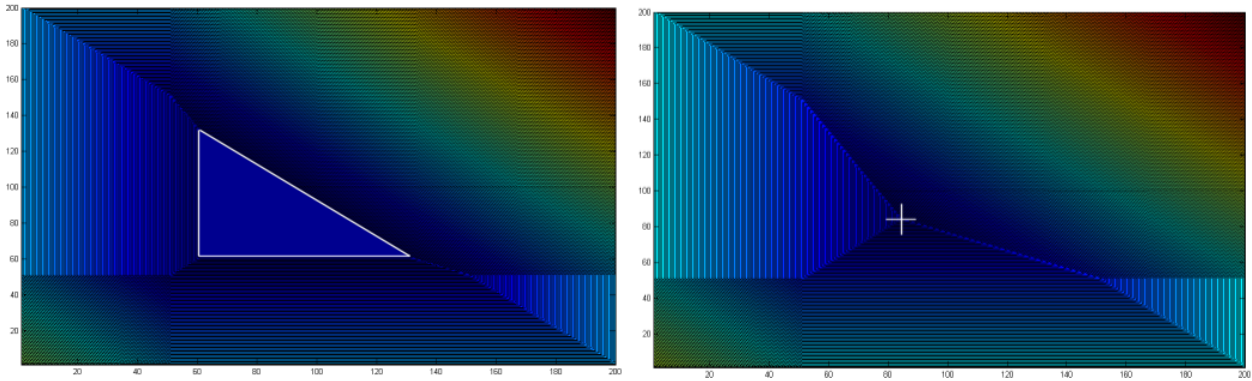


Fig. 5. Left: contour function (level sets) and minimal points (white triangle) of a function of the form (47), when $k_1 \leq 3k_2$. In the example $k_2 = 0.4$ and $k_1 = 0.5$. Right: contour function and minimal point of a function of the form (47), when $k_1 \geq 3k_2$. In this example $k_2 = 0.1$ and $k_1 = 0.5$.

Proof of Theorem 4: by (14) the vertex $\vec{m}_{L_\infty}^{\bar{A}}[m_b]$ of $\mathcal{CO}_{\mathcal{M}, L_\infty}^{\mathcal{C}}[m_b]$ meets the constraints (17) for $\mathcal{CO}_{\mathcal{M} \setminus \bar{A}, L_\infty}^{\mathcal{C}}[m_b]$. As for the other vertices of $\mathcal{CO}_{\mathcal{M}, L_\infty}^{\mathcal{C}}[m_b]$ (14), let us check the conditions on $\Delta \doteq \sum_{B \notin \mathcal{C}} m_b(B) - n \max_{B \notin \mathcal{C}} m_b(B)$ under which $\vec{m}_{L_\infty}^{\bar{A}}[m_b]$ meets (17). If Δ is positive,

$$\sum_{B \notin \mathcal{C}} m_b(B) - n \max_{B \notin \mathcal{C}} m_b(B) > 0 \equiv n \max_{B \notin \mathcal{C}} m_b(B) < \sum_{B \notin \mathcal{C}} m_b(B) \equiv \max_{B \notin \mathcal{C}} m_b(B) < \frac{1}{n}$$

which cannot happen, by constraint (15). Therefore, Δ is non-positive. In order for the vertex not to belong to (17) we need $m_b(\bar{A}) + \max_{B \notin \mathcal{C}} m_b(B) + \Delta < m_b(\bar{A}) - \max_{B \notin \mathcal{C}} m_b(B)$, i.e.,

$$\max_{B \notin \mathcal{C}} m_b(B) > \frac{1}{n-2} \sum_{B \notin \mathcal{C}} m_b(B), \quad (49)$$

which instead cannot be ruled out under condition (15).

Proof of Lemma 1: in the belief space the original b.f. and the desired consonant approximation are written as $\vec{b} = \sum_{\emptyset \subsetneq A \subsetneq \Theta} b(A) \vec{v}_A$, $\vec{c}_0 = \sum_{A \supseteq A_1} \left(\sum_{B \subseteq A, B \in \mathcal{C}} m_{co}(B) \right) \vec{v}_A$. Their difference vector is:

$$\begin{aligned}
\vec{b} - \vec{c\bar{o}} &= \sum_{A \not\supseteq A_1} b(A) \vec{v}_A + \sum_{A \supseteq A_1} \vec{v}_A \left[b(A) - \sum_{B \subseteq A, B \in \mathcal{C}} m_{co}(B) \right] \\
&= \sum_{A \not\supseteq A_1} b(A) \vec{v}_A + \sum_{A \supseteq A_1} \vec{v}_A \left[\sum_{\emptyset \subsetneq B \subseteq A} m_b(B) - \sum_{B \subseteq A, B \in \mathcal{C}} m_{co}(B) \right] \\
&= \sum_{A \not\supseteq A_1} b(A) \vec{v}_A + \sum_{A \supseteq A_1} \vec{v}_A \left[\sum_{B \subseteq A, B \in \mathcal{C}} (m_b(B) - m_{co}(B)) + \sum_{B \subseteq A, B \notin \mathcal{C}} m_b(B) \right] \\
&= \sum_{A \not\supseteq A_1} b(A) \vec{v}_A + \sum_{A \supseteq A_1} \vec{v}_A \left[\gamma(A) + b(A) - \sum_{A_j \in \mathcal{C}, A_j \subseteq A} m_b(A_j) \right],
\end{aligned} \tag{50}$$

after introducing the auxiliary variables $\gamma(A) = \sum_{B \subseteq A, B \in \mathcal{C}} (m_b(B) - m_{co}(B))$. All the terms in (50) associated with subsets $A \supseteq A_i, A \not\supseteq A_{i+1}$ depend on the same auxiliary variable $\gamma(A_i)$, while the difference in the component \vec{v}_Θ is trivially $1 - 1 = 0$. Therefore, we obtain (29).

Proof of Theorem 6: to understand the relationship between the sets $\mathcal{CO}_{\mathcal{M}, L_\infty}^{\mathcal{C}}[m_b]$ and $\mathcal{OC}^{\mathcal{C}}[b]$, let us rewrite the set of constraints for L_∞ approximations in \mathcal{M} under condition (15) as:

$$\begin{cases} m_{co}(A) - m_b(A) \leq \max_{B \notin \mathcal{C}} m_b(B) & A \in \mathcal{C}, A \neq \Theta, \\ \sum_{A \in \mathcal{C}, A \neq \Theta} (m_{co}(A) - m_b(A)) \geq (\sum_{B \notin \mathcal{C}} m_b(B) - \max_{B \notin \mathcal{C}} m_b(B)). \end{cases} \tag{51}$$

Indeed, when (15) does not hold, $co_{\mathcal{M}, L_\infty}^{\mathcal{C}}[m_b] = co_{\mathcal{M}, L_2}^{\mathcal{C}}[m_b]$ which is in general outside $\mathcal{OC}^{\mathcal{C}}[b]$.

To be a pseudo vertex of the set of partial outer approximations, a co.b.f. co must be the result of re-assigning the mass of each focal element to an element of the chain which contains it. Imagine that all the focal elements not in the desired chain \mathcal{C} have the same mass: $m_b(B) = \text{const}$ for all $B \notin \mathcal{C}$. Only up to $n - 1$ of them can be reassigned to elements of the chain different from Θ . As a matter of fact, if you reassigned n outside focal elements to such elements of the chain, in absence of mass redistribution internal to the chain, some element $A \in \mathcal{C}$ of the chain would surely violate the first constraint in (51), as it should receive mass from at least two outside f.e.s, yielding $m_{co}(A) - m_b(A) \geq 2 \max_{B \notin \mathcal{C}} m_b(B) > \max_{B \notin \mathcal{C}} m_b(B)$.

Indeed, this is true even if mass redistribution happens within the chain. Imagine that some mass $m_b(A), A \in \mathcal{C}$ is reassigned to some other $A' \in \mathcal{C}$. By the first constraint in (51), this is allowed only if $m_b(A) \leq \max_{B \notin \mathcal{C}} m_b(B)$. Therefore the mass of just one outside focal element can still be reassigned to A , while now none can be reassigned to A' . In both cases, since the number of elements outside the chain $m = 2^n - 1 - n$ is greater than n (unless $n \leq 2$) the second equation of (51) implies $(n - 1) \max_{B \notin \mathcal{C}} m_b(B) \geq (m - 1) \max_{B \notin \mathcal{C}} m_b(B)$ which cannot hold under (15).

Proof of Theorem 7: after recalling the expression (29) of the difference vector $\vec{b} - \vec{c}o$ in the belief space, the latter's L_1 norm reads as:

$$\|\vec{b} - \vec{c}o\|_{L_1} = \sum_{i=1}^{n-1} \sum_{A \supseteq A_i, A \not\supseteq A_{i+1}} \left| \gamma(A_i) + b(A) - \sum_{j=1}^i m_b(A_j) \right| + \sum_{A \not\supseteq A_1} |b(A)|. \quad (52)$$

The norm (52) can be decomposed into a number of summations which depend on a single auxiliary variable $\gamma(A_i)$. Such components are of the form $|x + x_1| + \dots + |x + x_n|$, with an even number of "nodes" $-x_i$. Let us consider the simple function of Figure 6-left: it is easy to see that similar functions are minimized by the interval of values comprised between their two innermost nodes, i.e., in the case of norm (52),

$$\begin{aligned} \sum_{j=1}^i m_b(A_j) - \gamma_{int1}^i &\leq \gamma(A_i) \leq \sum_{j=1}^i m_b(A_j) - \gamma_{int2}^i & \forall i = 1, \dots, n-1, \\ \equiv \sum_{j=1}^i m_b(A_j) - \gamma_{int2}^i &\leq \sum_{j=1}^i (m_b(A_j) - m_{co}(A_j)) \leq \sum_{j=1}^i m_b(A_j) - \gamma_{int1}^i & \forall i = 1, \dots, n-2, \\ \equiv \gamma_{int1}^i &\leq \sum_{j=1}^i m_{co}(A_j) \leq \gamma_{int2}^i & \forall i = 1, \dots, n-2, \end{aligned} \quad (53)$$

while $m_{co}(A_{n-1}) = b(A_{n-1})$, as by definition (31) $\gamma_{int1}^{n-1} = \gamma_{int2}^{n-1} = b(A_{n-1})$.

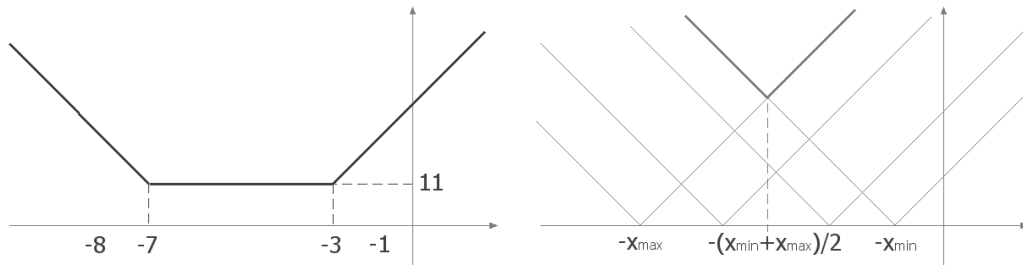


Fig. 6. Left: The minimization of the L_1 distance from the consonant subspace involves minimizing functions such as the one depicted above, $|x + 1| + |x + 3| + |x + 7| + |x + 8|$, which is minimized by $3 \leq x \leq 7$. Right: The minimization of the L_∞ distance from the consonant subspace involves minimizing functions of the form $\max\{|x + x_1|, \dots, |x + x_n|\}$ (in bold).

This is a set of constraints of the form $l_1 \leq x \leq u_1$, $l_2 \leq x + y \leq u_2$, $l_3 \leq x + y + z \leq u_3$, also expressed as $l_1 \leq x \leq u_1$, $l_2 - x \leq y \leq u_2 - x$, $l_3 - (x + y) \leq z \leq u_3 - (x + y)$. This is a polytope whose 2^{n-2} vertices are obtained by assigning to x , $x + y$, $x + y + z$ etcetera either their lower or their upper bound. For the specific set (53) this yields exactly (30).

Proof of Theorem 8: the minimal value of a function of the form $|x + x_1| + \dots + |x + x_n|$ is $\sum_{i \geq int_2} x_i - \sum_{i \leq int_1} x_i$. In the case of the L_1 norm (52), such minimal attained value is:

$$\sum_{A:A \supseteq A_i, A \not\supseteq A_{i+1}, b(A) \geq \gamma_{int_2}^i} b(A) - \sum_{A:A \supseteq A_i, A \not\supseteq A_{i+1}, b(A) \leq \gamma_{int_1}^i} b(A),$$

since in the difference the addenda $\sum_{j=1}^i m_b(A_j)$ disappear. Overall the minimal L_1 norm is:

$$\begin{aligned} & \sum_{i=1}^{n-2} \left(\sum_{A:A \supseteq A_i, A \not\supseteq A_{i+1}, b(A) \geq \gamma_{int_2}^i} b(A) - \sum_{A:A \supseteq A_i, A \not\supseteq A_{i+1}, b(A) \leq \gamma_{int_1}^i} b(A) \right) + \sum_{A \not\supseteq A_1} b(A) \\ &= \sum_{\emptyset \subsetneq A \subsetneq \Theta, A \neq A_{n-1}} b(A) - 2 \sum_{i=1}^{n-2} \sum_{A:A \supseteq A_i, A \not\supseteq A_{i+1}, b(A) \leq \gamma_{int_1}^i} b(A), \end{aligned}$$

which is minimized by the chains (33).

Proof of Theorem 9: by replacing the hypothesized solution (36) for the L_2 approximation in \mathcal{B} in the system of constraints (35) we get, for all $j = 1, \dots, n-1$:

$$\left\{ \sum_{A \subsetneq \Theta} m_b(A) \langle \vec{b}_A, \vec{b}_{A_j} \rangle - ave(\mathcal{L}_{n-1}) \langle \vec{b}_{A_{n-1}}, \vec{b}_{A_{n-1}} \rangle - \sum_{i=1}^{n-2} ave(\mathcal{L}_i) \left(\langle \vec{b}_{A_i}, \vec{b}_{A_j} \rangle - \langle \vec{b}_{A_{i+1}}, \vec{b}_{A_j} \rangle \right) \right\} = 0,$$

where $\langle \vec{b}_{A_{n-1}}, \vec{b}_{A_{n-1}} \rangle = 1$ for all j , while (since $\langle \vec{b}_A, \vec{b}_B \rangle = |\{C \subsetneq \Theta : C \supseteq A, B\}| = 2^{|(A \cup B)^c|} - 1$): $\langle \vec{b}_{A_i}, \vec{b}_{A_j} \rangle - \langle \vec{b}_{A_{i+1}}, \vec{b}_{A_j} \rangle = \langle \vec{b}_{A_j}, \vec{b}_{A_j} \rangle - \langle \vec{b}_{A_j}, \vec{b}_{A_j} \rangle = 0$ whenever $i < j$, and $\langle \vec{b}_{A_i}, \vec{b}_{A_j} \rangle - \langle \vec{b}_{A_{i+1}}, \vec{b}_{A_j} \rangle = (|\{A \supseteq A_i, A_j\}| - 1) - (|\{A \supseteq A_{i+1}, A_j\}| - 1) = |\{A \supseteq A_i\}| - |\{A \supseteq A_{i+1}\}| = 2^{|A_{i+1}^c|}$ whenever $i \geq j$. Therefore the system of constraints becomes (as $2^{A_n^c} = 2^{|\emptyset|} = 1$):

$$\left\{ \sum_{A \subsetneq \Theta} m_b(A) \langle \vec{b}_A, \vec{b}_{A_j} \rangle - \sum_{i=j}^{n-1} ave(\mathcal{L}_i) 2^{|A_{i+1}^c|} = 0 \quad j = 1, \dots, n-1, \right.$$

which, given the expression (37) for $ave(\mathcal{L}_i)$, reads as:

$$\left\{ \sum_{A \subsetneq \Theta} m_b(A) \langle \vec{b}_A, \vec{b}_{A_j} \rangle - \sum_{i=j}^{n-1} \sum_{A \supseteq A_i, A \not\supseteq A_{i+1}} b(A) = 0. \quad j = 1, \dots, n-1. \right. \quad (54)$$

Let us study the second addenda of each equation above. We get:

$$\sum_{i=j}^{n-1} \sum_{A \supseteq A_i, A \not\supseteq \{x_{i+1}\}} b(A) = \sum_{A_j \subsetneq A \subsetneq \Theta} b(A),$$

as any $A \supseteq A_j$, $A \neq \Theta$ is such that $A \supseteq A_i$ and $A \not\supseteq A_{i+1}$ for some A_i in the desired maximal chain which contains A_j . Indeed, let us define x_{i+1} as the lowest index element (according to the ordering associated with the desired focal chain $A_1 \subset \dots \subset A_n$, i.e., $x_j \doteq A_j \setminus A_{j-1}$) among those singletons in A^c . But then, by construction, $A \supseteq A_i$ and $A \not\supseteq \{x_{i+1}\}$. Finally:

$$\sum_{A_j \subsetneq A \subsetneq \Theta} b(A) = \sum_{A_j \subsetneq A \subsetneq \Theta} \sum_{C \subseteq A} m_b(C) = \sum_{C \subseteq \Theta} m_b(C) |\{A : C \subseteq A \subsetneq \Theta, A \supseteq A_j\}|$$

where $|\{A : C \subseteq A \subsetneq \Theta, A \supseteq A_j\}| = |\{A : A \supseteq (C \cup A_j), A \neq \Theta\}| = 2^{|(C \cup A_j)^c|} - 1 = \langle \vec{b}_C, \vec{b}_{A_j} \rangle$
 so that, summarizing, $\sum_{i=j}^{n-1} \sum_{A \supseteq A_i, A \not\supseteq \{x_{i+1}\}} b(A) = \sum_{C \subsetneq \Theta} m_b(C) \langle \vec{b}_C, \vec{b}_{A_j} \rangle$.

By replacing the latter into (54) we obtain the trivial identity $0 = 0$.

Proof of Theorem 10: given the expression (29) for the difference vector of interest in the belief space, we can compute the explicit form of its L_∞ norm as:

$$\begin{aligned} \|\vec{b} - \vec{c}\|_\infty &= \max \left\{ \max_i \max_{A \supseteq A_i, A \not\supseteq A_{i+1}} \left| \gamma(A_i) + b(A) - \sum_{j=1}^i m_b(A_j) \right|, \max_{A \not\supseteq A_1} \left| \sum_{B \subseteq A} m_b(B) \right| \right\} \\ &= \max \left\{ \max_i \max_{A \supseteq A_i, A \not\supseteq A_{i+1}} \left| \gamma(A_i) + b(A) - \sum_{j=1}^i m_b(A_j) \right|, b(A_1^c) \right\}, \end{aligned} \quad (55)$$

as $\max_{A \not\supseteq A_1} \left| \sum_{B \subseteq A} m_b(B) \right| = b(A_1^c)$. Now, (55) can be minimized separately for each $i = 1, \dots, n-1$. Clearly, the minimum is attained when the variable elements in (55) are not greater than the constant element $b(A_1^c)$:

$$\max_{A \supseteq A_i, A \not\supseteq A_{i+1}} \left| \gamma(A_i) + b(A) - \sum_{j=1}^i m_b(A_j) \right| \leq b(A_1^c). \quad (56)$$

The left hand side of (56) is a function of the form $\max \{|x + x_1|, \dots, |x + x_n|\}$ (see Figure 6-right). Such functions are minimized by $x = -\frac{x_{min} + x_{max}}{2}$ (see Figure 6-right again). In the case of (56), such minimum and maximum offset values are, respectively,

$$\gamma_{min}^i = b(A_i) - \sum_{j=1}^i m_b(A_j), \quad \gamma_{max}^i = b(\{x_{i+1}\}^c) - \sum_{j=1}^i m_b(A_j) = b(A_i + A_{i+1}^c) - \sum_{j=1}^i m_b(A_j),$$

once defined $\{x_{i+1}\} = A_{i+1} \setminus A_i$. As for each value of γ , $|\gamma(A_i) + \gamma|$ is dominated by either $|\gamma(A_i) + \gamma_{min}^i|$ or $|\gamma(A_i) + \gamma_{max}^i|$, the norm of the difference vector is minimized by the values of $\gamma(A_i)$ such that:

$$\max \left\{ |\gamma(A_i) + \gamma_{min}^i|, |\gamma(A_i) + \gamma_{max}^i| \right\} \leq b(A_1^c) \quad \forall i = 1, \dots, n-1,$$

$$\text{i.e., } -\frac{\gamma_{min}^i + \gamma_{max}^i}{2} - b(A_1^c) \leq \gamma(A_i) \leq -\frac{\gamma_{min}^i + \gamma_{max}^i}{2} + b(A_1^c) \text{ for } i = 1, \dots, n-1.$$

In terms of mass assignments, this is equivalent to:

$$-b(A_1^c) + \frac{b(A_i) + b(\{x_{i+1}\}^c)}{2} \leq \sum_{j=1}^i m_{co}(A_i) \leq b(A_1^c) + \frac{b(A_i) + b(\{x_{i+1}\}^c)}{2}. \quad (57)$$

Once again this is a set of constraints of the form $l_1 \leq x \leq u_1, l_2 \leq x + y \leq u_2, l_3 \leq x + y + z \leq u_3$, also expressed as $l_1 \leq x \leq u_1, l_2 - x \leq y \leq u_2 - x, l_3 - (x + y) \leq z \leq u_3 - (x + y)$, which

is a polytope with vertices obtained by assigning to x , $x + y$, $x + y + z$ etcetera either their lower or their upper bound. This generates 2^{n-1} possible combinations, which for the specific set (57) yields (see the proof of Theorem 7) Equation (38). As for the barycenter of (38), we have that:

$$\begin{aligned} m_{co}(A_1) &= \frac{b(A_1)+b(\{x_2\}^c)}{2} \\ m_{co}(A_i) &= \frac{b(A_i)+b(\{x_{i+1}\}^c)}{2} - \frac{b(A_{i-1})+b(\{x_i\}^c)}{2} = \frac{b(A_i)-b(A_{i-1})}{2} + \frac{pl_b(\{x_i\})-pl_b(\{x_{i+1}\})}{2}, \\ m_{co}(A_n) &= 1 - \sum_{i=2}^{n-1} \left[\frac{b(A_i)+b(\{x_{i+1}\}^c)}{2} - \frac{b(A_{i-1})+b(\{x_i\}^c)}{2} \right] - \frac{b(A_1)+b(\{x_2\}^c)}{2} = 1 - b(A_{n-1}). \end{aligned}$$

Proof of Theorem 12: to study the admissibility of the L_2 approximation and the barycenter of the L_1 approximations we need to go deeper in our understanding of the structure of \mathcal{L}_i . Indeed, the latter can be expressed as $\mathcal{L}_i = \{b(A_i \cup B), \emptyset \subseteq B \subseteq A_{i+1}^c\}$; as for \mathcal{L}_{i-1} , it contains $2 \cdot |\mathcal{L}_i|$ elements, which can be written as the union of two lists of $|\mathcal{L}_i|$ elements: $\mathcal{L}_{i-1} = \mathcal{L}_{i-1}^1 \cup \mathcal{L}_{i-1}^2 = \{b(A_{i-1} \cup B), \emptyset \subseteq B \subseteq A_{i+1}^c\} \cup \{b(A_{i-1} \cup \{x_{i+1}\} \cup B), \emptyset \subseteq B \subseteq A_{i+1}^c\}$. Now, $b(A_i \cup B) \geq b(A_{i-1} \cup B)$ for all $\emptyset \subseteq B \subseteq A_{i+1}^c$, so that each element in \mathcal{L}_i dominates the corresponding element of \mathcal{L}_{i-1}^1 no matter the chain \mathcal{C} . On the other hand, $b(A_i \cup B) \geq b(A_{i-1} \cup \{x_{i+1}\} \cup B)$ for all $\emptyset \subseteq B \subseteq A_{i+1}^c$ iff $pl_b^{A_i+2}(x_i) \geq pl_b^{A_{i+1}+2}(x_{i+1})$, where $pl_b^A(x) \doteq \sum_{B \subseteq A, B \ni x} m_b(B)$. If the latter condition holds:

- $\frac{b(A_{i-1} \cup B) + b(A_{i-1} \cup \{x_{i+1}\} \cup B)}{2} \leq b(A_i \cup B)$ for all $\emptyset \subseteq B \subseteq A_{i+1}^c$, so that:

$$ave(\mathcal{L}_i) = \frac{\sum_{\emptyset \subseteq B \subseteq A_{i+1}^c} b(A_i \cup B)}{|\mathcal{L}_i|} \geq \frac{\sum_{\emptyset \subseteq B \subseteq A_{i+1}^c} \frac{b(A_{i-1} \cup B) + b(A_{i-1} \cup \{x_{i+1}\} \cup B)}{2}}{|\mathcal{L}_i|} = ave(\mathcal{L}_{i-1});$$

- as for the barycenter L_1 approximation, $int_1(\mathcal{L}_i) \geq b(A_i \cup B)$ for all B s.t. $b(A_i \cup B) \leq int_1(\mathcal{L}_i)$ so that $int_1(\mathcal{L}_i) \geq b(A_i \cup \{x_{i+1}\} \cup B)$ for all B s.t. $b(A_i \cup B) \leq int_1(\mathcal{L}_i)$ as well; hence $int_1(\mathcal{L}_i) \geq int_1(\mathcal{L}_{i-1})$ since $int_1(\mathcal{L}_i)$ dominates at least half the elements of \mathcal{L}_{i-1} ;
- in the same way, $int_2(\mathcal{L}_i) \geq b(A_i \cup B)$ for all B s.t. $b(A_i \cup B) \leq int_2(\mathcal{L}_i)$ so that $int_2(\mathcal{L}_i) \geq b(A_i \cup \{x_{i+1}\} \cup B)$ for the same B s, hence $int_2(\mathcal{L}_i) \geq int_2(\mathcal{L}_{i-1})$ since $int_2(\mathcal{L}_i)$ dominates at least $|\mathcal{L}_{i-1}|/2 + 2$ elements of \mathcal{L}_{i-1} .

Therefore, if $\mathcal{C} = \{A_1 \subset \dots \subset A_n\}$, with $A_i = \{x_1, \dots, x_i\}$ is such that $pl_b^{A_i+2}(x_i) \geq pl_b^{A_{i+1}+2}(x_{i+1})$ for all i , then $ave(\mathcal{L}_i) \geq ave(\mathcal{L}_{i-1})$, $\frac{int_1(\mathcal{L}_i) + int_2(\mathcal{L}_i)}{2} \geq \frac{int_1(\mathcal{L}_{i-1}) + int_2(\mathcal{L}_{i-1})}{2}$ for all i , and both $co_{\mathcal{B}, L_1}^{\mathcal{C}}[b]$ and $co_{\mathcal{B}, L_2}^{\mathcal{C}}[b]$ are admissible.

REFERENCES

- [1] G. Shafer, *A Mathematical Theory of Evidence*. Princeton University Press, 1976.
- [2] D. Dubois and H. Prade, *Possibility theory*. New York: Plenum Press, 1988.

- [3] —, “Consonant approximations of belief functions,” *Int. J. of Approximate Reasoning*, vol. 4, pp. 419–449, 1990.
- [4] C. Joslyn and G. Klir, “Minimal information loss possibilistic approximations of random sets,” in *Proceedings of the FUZZ-IEEE Conference*, J. Bezdek, Ed., 1992, pp. 1081–1088.
- [5] C. Joslyn, “Possibilistic normalization of inconsistent random intervals,” 1997, pp. 44–51.
- [6] P. Baroni, “Extending consonant approximations to capacities,” in *Proc. of IPMU*, 2004, pp. 1127–1134.
- [7] F. Cuzzolin, “The geometry of consonant belief functions: simplicial complexes of necessity measures,” *Fuzzy Sets and Systems*, vol. 161, no. 10, pp. 1459–1479, 2010.
- [8] A. Chateaneuf and J. Jaffray, “Some characterization of lower probabilities and other monotone capacities through the use of mbius inversion,” *Math. Soc. Sci.*, vol. 17, pp. 263–283, 1989.
- [9] E. Miranda, I. Couso, and P. Gil, “Extreme points of credal sets generated by 2-alternating capacities,” *International Journal of Approximate Reasoning*, vol. 33, pp. 95–115, 2003.
- [10] P. Smets and R. Kennes, “The transferable belief model,” *Artificial Intelligence*, vol. 66, pp. 191–234, 1994.
- [11] D. Dubois and H. Prade, “Unfair coins and necessity measures: towards a possibilistic interpretation of histograms,” *Fuzzy Sets and Systems*, vol. 10, no. 1, pp. 15–20, 1983.
- [12] D. Dubois, H. Prade, and S. Sandri, “On possibility-probability transformations,” in *Fuzzy Logic: State of the Art*, R. Lowen and M. Lowen, Eds. Kluwer Academic Publisher, 1993, p. 103-112.
- [13] P. Smets, “Belief functions on real numbers,” *Int. J. of Approximate Reasoning*, vol. 40, no. 3, pp. 181–223, 2005.
- [14] A. Aregui and T. Denoeux, “Constructing consonant belief functions from sample data using confidence sets of pignistic probabilities,” *Int. J. of Approximate Reasoning*, vol. 49, no. 3, pp. 575–594, 2008.
- [15] F. Cuzzolin, “Two new Bayesian approximations of belief functions based on convex geometry,” *IEEE Tr. SMC-B*, vol. 37, no. 4, pp. 993–1008, 2007.
- [16] —, “Consistent approximation of belief functions,” in *Proceedings of ISIPTA’09, Durham, UK*, June 2009.
- [17] —, “A geometric approach to the theory of evidence,” *IEEE Transactions on Systems, Man and Cybernetics part C*, vol. 38, no. 4, pp. 522–534, 2008.
- [18] —, “Geometric conditioning of belief functions,” in *Proceedings of BELIEF’10, Brest, France*, 2010.
- [19] A.-L. Jousselme and P. Maupin, “On some properties of distances in evidence theory,” in *Proceedings of BELIEF’10*.
- [20] C. Shi, Y. Cheng, Q. Pan, and Y. Lu, “A new method to determine evidence distance,” in *Proceedings of the 2010 International Conference on Computational Intelligence and Software Engineering (CiSE)*, 2010, pp. 1–4.
- [21] W. Jiang, A. Zhang, and Q. Yang, “A new method to determine evidence discounting coefficient,” in *Lecture Notes in Computer Science*, 2008, vol. 5226/2008, pp. 882–887.
- [22] V. Khatibi and G. Montazer, “A new evidential distance measure based on belief intervals,” *Scientia Iranica - Transactions D: Computer Science and Engineering and Electrical Engineering*, vol. 17, no. 2, pp. 119–132, 2010.
- [23] J. Diaz, M. Rifqi, and B. Bouchon-Meunier, “A similarity measure between basic belief assignments,” in *Proceedings of FUSION’06*.
- [24] F. Cuzzolin and R. Frezza, “Geometric analysis of belief space and conditional subspaces,” in *Proceedings of ISIPTA’01, Ithaca, NY*, 26-29 June 2001.
- [25] P. Smets, “The nature of the unnormalized beliefs encountered in the transferable belief model,” in *Proceedings of UAI’92*. San Mateo, CA: Morgan Kaufmann, 1992, pp. 292–29.
- [26] I. Gilboa and D. Schmeidler, “Additive representations of non-additive measures and the choquet integral,” *Annals of Operations Research*, vol. 52, no. 1, pp. 43–65, 1994.

- [27] B. Dubrovin, S. Novikov, and A. Fomenko, *Sovremennaja geometrija. Metody i prilozhenija*. Moscow: Nauka, 1986.
- [28] F. Cuzzolin, "Geometry of Dempster's rule of combination," *IEEE Transactions on Systems, Man and Cybernetics part B*, vol. 34:2, pp. 961–977, April 2004.
- [29] A.-L. Jousselme and P. Maupin, "Distances in evidence theory: Comprehensive survey and generalizations," *Int. J. of Approximate Reasoning*, 2011 (in press).
- [30] F. Cuzzolin, "Complexes of outer consonant approximations," in *Proceedings of ECSQARU'09, Verona, Italy*, 2009.
- [31] D. Lewis, "Probabilities of conditionals and conditional probabilities," *Philosophical Review*, vol. 85, pp. 297–315, 1976.
- [32] A. Perea, "A model of minimal probabilistic belief revision," *Theory and Decision*, vol. 67, no. 2, pp. 163–222, 2009.
- [33] P. Gardenfors, *Knowledge in Flux: Modeling the Dynamics of Epistemic States*. MIT Press, Cambridge, MA, 1988.